

MV "Vestland Artemis"

SHIP DESIGN	VS 485 MK II		
CLASSIFICATION	BUREAU VERITAS		
BUILDER	HELLESØY VERFT AS		
DELIVERY	2011		
IMO NUMBER	9544516		
PORT OF REGISTRY	Nassau		
FLAG	Bahamas		
MMSI	311000772		
CALL SIGN	C6DS7		
INMARSAT C	431103559 / 431103558		
VSAT	+ 47 2615639-Engine / 2615640/41/42-Bridge		
MOBILE NORWAY / UK / RUSSIA	+ 47 909 14 574 / +44 7594 088 263 / +7 921 032 7689		
E-Mail	captain.artemis@vestlandoffshore.no		
	bridge.artemis@vestlandoffshore		
OWNER:	GSE Shipping 1 KS	MANAGER:	VESTLAND MANAGEMENT AS, N-5384 TORANGSVÅG,
MAIN DIMENSIONS		CLASS NOTATIONS	
Length O.A	85,00 M	I [HULL] MACH Oil recovery Supply vessel , Supply vessel - oil product Unrestricted Navigation COMF-NOISE 3 , COMF-VIB 3 , [AUT-UMS , ICE heavycargo (AREA1: 98.0665 kN/m2) , SYS-NEQ-OSV CPS(WBT), CLEANSHIP SUPER, DYNAPOS AM/AT R, SDS	
Length P.P	77,70 M		
Breadth	20,0 M		
Max Draft	6.80 M		
Gross Tonnage	4 344 T		
Net Tonnage	1 800 T		
Deadweight	5483 T		



OUTLINE SPECIFICATION

MACHINERY AND PROPELLER PLANTS

Main Engines/Generators : 4 x 1825 kw CAT 3516B-DSG
Emergency Generator: 1 x 265 kw Volvo Penta D9A MGRC
Main Propulsion: 2 x 2300 kw SteerProp SP 35 CRP
FWD Azimuth: 1 x 880 kw Brunvoll CPP
FWD Tunnel Thrusters: 2 x 1000 kw Brunvoll CPP

CARGO CAPACITIES NOFO 2009

Deck Cargo: 2 800 Tons
Deck Area: 1004 m²
59.8 x 16.8 meter free space
Deck Strength: 10 Tons/m²
Fuel Oil: 903 m³, in 5 tanks
Liquid Mud (SG 2.8): 693.7 m³, in 6 tanks
Agitators: Fitted in each mud tanks
Brine (SG 2.5): 418 m³, in 2 tanks
Base Oil: 203.8 m³, in 2 tanks
Pot Water: 955 m³, in 10 tanks
Drill Water/Ballast: 2546 m³, in 24 tanks
Dry Bulk: 330m³ in 6 tanks
Methanol: 145 m³, in 1 tank
Special Products: 146 m³, in 1 tank
Slop: 186 m³, in 2 tanks
ORO: 1803 m³, 8 x 100 m³/hour
Cement/Barite/Bentonit: 330 m³, in 6 tanks

Discharge

Fuel Transfer Capacity: 2 x 150 m³/hour, @ 9 bar
Flowmeter with Printer
Brine (SG 2.5): 2 x 150 m³/hour @ 24/11 bar
Base Oil: 2 x 100 m³/hour @ 9 bar
Pot Water: 2 x 150 m³/hour @ 9 bar
Drill water/Ballast: 2 x 150 m³/hour @ 9 bar
Methanol: 1 x 75 m³/hour @ 9 bar
Special Product: 1 x 75 m³/hour @ 9 bar
Slop: 2 x 100 m³/hour 24/11 bar
Cement/Barite/Bentonit: 2 x 30 m³/hour @ 6.5 bar
ORO: 8 x 100 m³/hour @ 9 bar

ENVIRONMENT AND CARGO CONTROL PLANTS

Incinerator: Saniterm SH 20 SM/SR
Steam Generator: Parat Halvorsen AS 1600 kw
Hot Liquid Cargo Tank: 1 x 146 m³
Tank Cleaning: Per Gjerdrum AS
Special Cargo Tanks: Stainless Steel Tanks for Methanol
Inert Gas System: N2 Generator, Membrane Separation
Cargo Manifolds: Centre / Aft each side inside "Safe haven"

NAVIGATION

Radar 10 cm: Furuno FAR-2137S
Arpha radar 3 cm: Furuno FCR-2117
Autopilot: Simrad AP-50
Gyro: 3 x Simrad GC-80
DP system: Kongsberg DP II K-pos 22
Joystick: Kongsberg C-Joy Constant
GPS: Furuno GP-150
AIS: Furuno FA-150
Speed log: Skipper EML224
Echo sounder: 1 x Furuno FE-700
Digital speed and distance repeater: Skipper IR300
Electronic chart computer ECDIS: Furuno Tecdis T-2137

SPEED AND FUEL CONSUMPTION

Full speed: 15.0 knots 24.0 m³/24 hours
Service speed: 12.5 knots 16.0 m³/24 hours
Economic speed: 11.0 knots 11,3 m³/24 hours
DP operation: 5.6 m³/24 hours at position keeping
Harbor mode: 1,4 m³/24 hours

CARGO HANDLING EQUIPMENT

1 x TTS Marine GPK knuckle crane, SWL 3 tons/13 meter
1 x TTS Marine GPT telescopic jib, SWL 3 tons/13 meter
2 x Capstans aft, NDM SWL 8 tons
6 x Cargo Securing Winches, NDM SWL 3 tons
2 x Tugger Winch, NDM TU SWL 15 tons
12X Reefer points on board
2 X 440V 3P+;32A-7H-500V
6 X 220V 2P+;16A-6H-250V
4 X 110V;32A-4H-110/130V

LIFE SAVING EQUIPMENT

Ship Certificate: 25 persons
Life Rafts: 4 x 25 persons Unitor
MOB: 1 x NORSAFE Mako 655 Waterjet FRB
MOB Davit: 1 x HLT 3500 TTS
Survival Suits: 31 SOLAS Immersion Suits

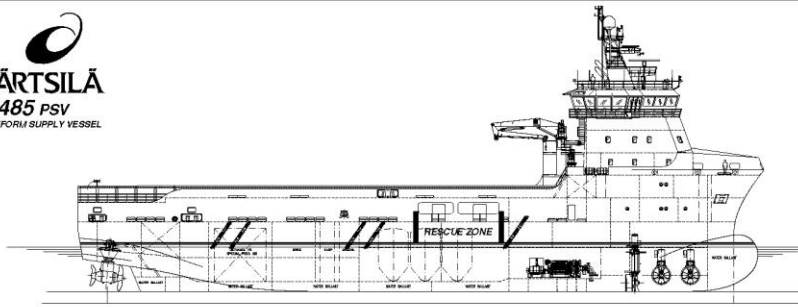
COMMUNICATION

Navtex: Furuno NX-700 B
Radar Transponder: 2 x Jotron Tron SART
DSC Terminal: Furuno FS 2570 C
AIS: Furuno FA 150
EPIRB manual: Jotron 45 SX
EPIRB Free Float: Jotron Tron 40 S Mk II
Radio Station: SSB, MF, HF, Furuno FS 2570C
VHF Portable: 3 x Jotron Tron TR 20 GMDSS
VHF Station: Furuno FM 8800 S
UHF Portable: 5 x Motorola GP 340
Inmarsat C: Furuno Felcom 15
Intercom: Zenitel ACM 144 66/VO
Sound System: Vingtor VSS 111
Emergency: Vingtor VSP 211 L
PA System: Zenitel VPA 120, 240 and 400

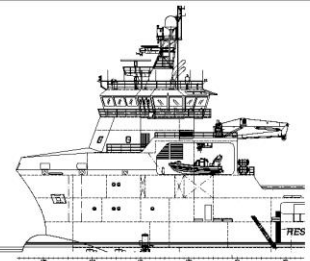
ACCOMMODATION

Outfitted for 25 persons in spacious and comfortable facilities
Single Cabins: 9 with bathrooms
Double Cabins: 8 with bathrooms
Hospital: 1 Highest standard
Office: 1 fully outfitted
Day Room: 2 comfortable outfitted
Gymnasium: 1 fully outfitted
Entertainment: In Day Rooms and all Cabins
Antiroll Tank: 1 x 440 m³ + 1 x 160 m³



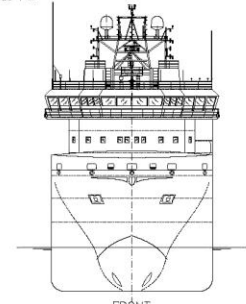
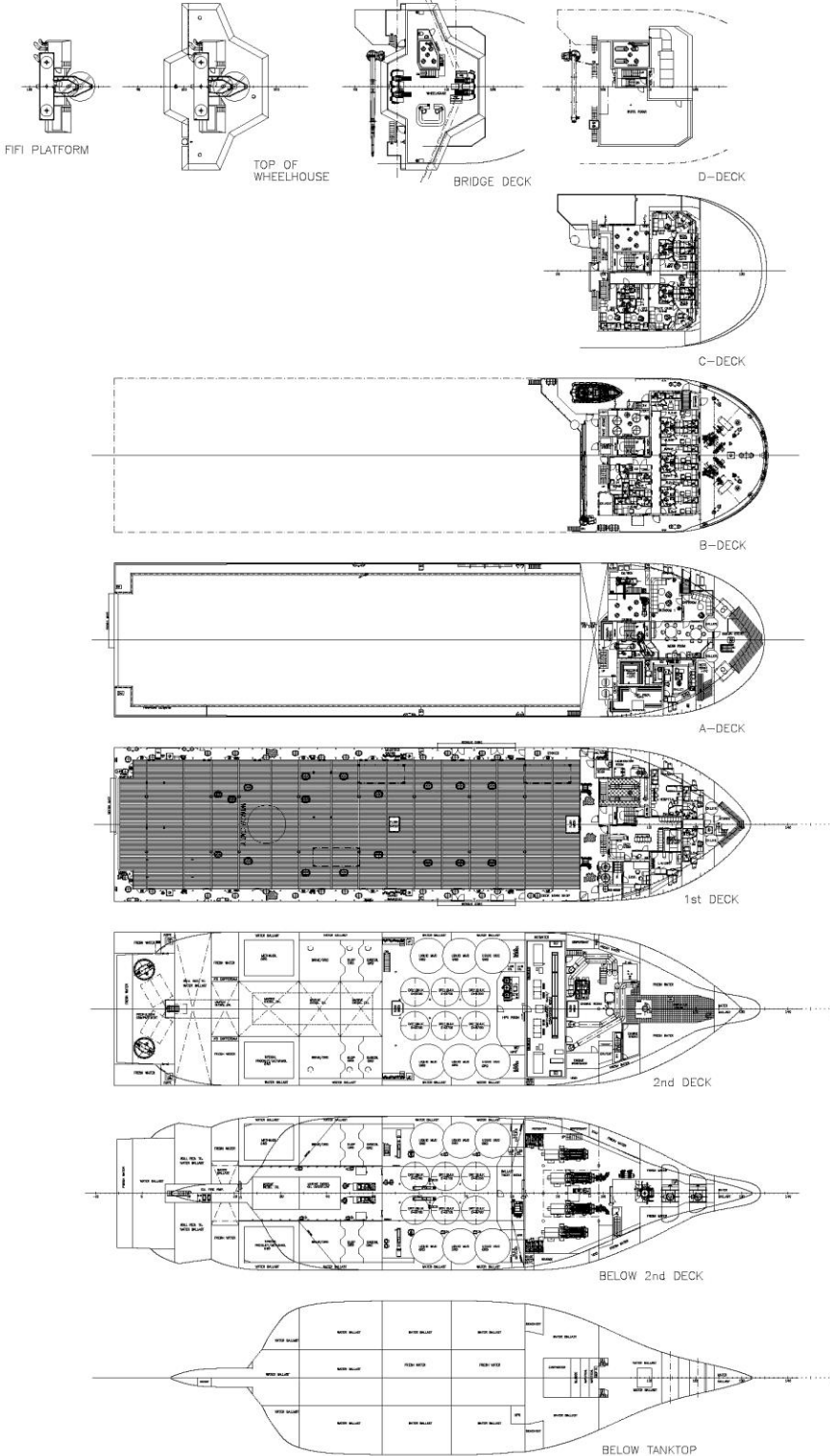


120.00.000.000.00.00
 120.00.000.000.00.00
 120.00.000.000.00.00
 120.00.000.000.00.00
 120.00.000.000.00.00
 120.00.000.000.00.00
 120.00.000.000.00.00
 120.00.000.000.00.00

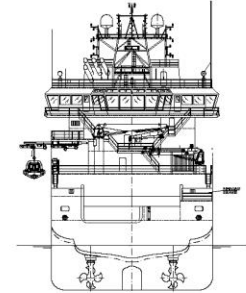


PROFILE PS

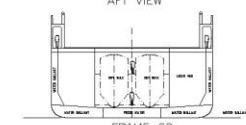
PROFILE SB



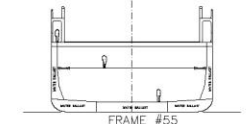
FRONT



AFT VIEW



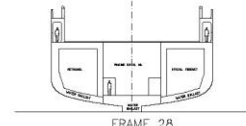
FRAME 69



FRAME #55



FRAME 38



FRAME 28

CABIN PLAN

	11 Cabin	12 Cabin	13 Cabin	TOTAL CABINS
C-DECK:	8 Cabin	—	—	8 CABINS
B-DECK:	7 Cabin	—	—	7 CABINS
A-DECK:	—	—	—	—
1st DECK:	—	—	—	—
TOTAL:	15 Cabin	0 Cabin	0 Cabin	15 CABINS

PRINCIPAL PARTICULARS:

LENGTH OVER ALL:	85.00 m
LENGTH BETW. PERP.:	77.70 m
BREADTH:	20.00 m
DEPTH TO 1st DECK:	8.60 m
DEPTH TO 2nd DECK:	5.40 m
DECK AREA:	1000 m ²
FRAME SPACING:	600 mm

PLATFORM SUPPLY VESSEL VS485 PSV		101	
GENERAL ARRANGEMENT		101	
WÄRTSILÄ Ship Design		4253	
101-001		1/1	

