

M/V Nordic Explorer

SHIP DESIGN	Seismic Vessel
CLASSIFICATION	Rina
BUILDER	Langsten Shipyard, Tomrefjorden, Norway
IMO NUMBER	8517449
PORT OF REGISTRY	Nassau
FLAG	Bahamas
DELIVERY	21.02.1986
CALL SIGN	C6TU3

OWNER:	ØSTERVOLD SEISMIKK AS N-5384 TORANGSVÅG	MANAGER:	VESTLAND MANAGEMENT AS N-5384 TORANGSVÅG
---------------	--	-----------------	---

MAIN DIMENSIONS		CLASS NOTATIONS
Length O.A	81,1 m	*1A1 E0 HELDK Ice(1A) PMS
Length P.P	73,0 m	
Breadth	16,5 m	
Draft	8,1 m when fully loaded	
Gross Tonnage	3 861 T	

Full compliance with SOLAS, Marpol 73/78 and other relevant maritime and industrial standards, E&P Forum and IAGC requirements. Further documentation and certification available on request.



OUTLINE SPECIFICATION

MACHINERY AND PROPELLER PLANTS

Machinery	
Propulsion type:	Wickman 12Wx28 3960kw 12V28B Two step RPM 600-660 MGO
Propeller:	Wickman variabel pitch propeller 9 PR4-12, 4 blade Volda Gear reduction 4.41-1
Thrusters	Bow: 1 Brunvoll tunnel thruster 360 kW Stern: 1 Brunvoll tunnel thruster 590 kW
Secondary propulsion:	2 Azimuth thruster Brunvoll 800 kW, contr pitch 0-364rpm
Power Plant:	2 x Stamford MHC 734 F2 1072kw 2 x Stamford MHC 734 H2 1448 kw
Other Machinery:	1 x CAT 3516 2 x CAT 3512
Seismic Compressors:	3 x LMF. 420E/VCS2413W14, 42,4 m3 / min. 138 bar Compressor with frequency converter

Deck Machinery

Deck Crane:	
Deck Crane:	

Navigation Equipment

Auto Pilot:	Robertson AP 9 MK III, Robtrack
Radar :	1 x Furuno FR 2827 X-band ice radar JRC JMA 5332-12m S-band ice radar
Echosounder:	Furuno FE 700 Depth 800 meter Simrad EA 600 Depth 9000 meter FURUNO Doppler speed log DS-80
Water speed log:	Meridian Surveyor
Gyro Compass	TECDIS 1, C-MAP, w/ ARPA, AIS connected
Ecdis:	Furuno DS-80
Dopler log:	
Helideck:	19 m Super Puma 332 L1/Bell 212ST, Bell 412Capacities)
DGPS:	FURUNO GP-150
Navigation Echo Sounder:	FURUNO FE-700
GMDSS	
Simplified VDR	Kongsberg
AIS	FURUNO FA-150
Speed Log	FURUNO DS-80
Fac-Simile	
DP System	N/A
Gyrocompass	SIMRAD GC-80

Seismic Equipment

Seismic Compressors:	3 x LMF. 420E/VCS2413W14, 42,4 m3 / min. 138 bar Compressor with frequency converters
----------------------	--

Energy source

Manufacturer and type	Bolt 1900 LLXT
Effective volume	2x3090 cu.in / 2 x 4130 cu.in - GeoSource (standard array(s))
Maximum numb. of sub-arrays	6
Standard array depth(s)	5 - 9m + 9m
Position of depth transducers	Front and tail of subarray
Working pressure	2000 psi
Type of firing sensors	Pressure activated
Position of firing sensors	Each gun
Type of firing synchronizer unit	RTS BigShot
Timing resolution	0.1ms ms
Timing accuracy	+/- 1.0ms
Position of near field phones	Each single gun and cluster, 7 per sub-array
Air compressors capacity	3x1483 cfm
Number of air compressors	3 x LMF electric driven and frequency controlled for fuel saving

SPEED AND FUEL CONSUMPTION

Speed:	Max 12 knots
Endurance seismic days:	31/38 depending on fuel consumption

CAPACITIES

Fuel:	1400 m3
Lube Oil:	24 m ³
FW:	110 T
Fresh water maker:	16 m3/day (Alfa Laval) 15m3/day (Reversed Osmosis)
Sewage treatment plant:	Marinfloc AB, ASTS 24, Max. 24m3 / 24 liter
Incinerator:	Teamtec OG 400C 580kw

LIFE SAVING EQUIPMENT

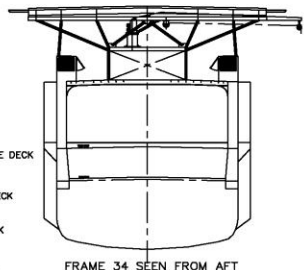
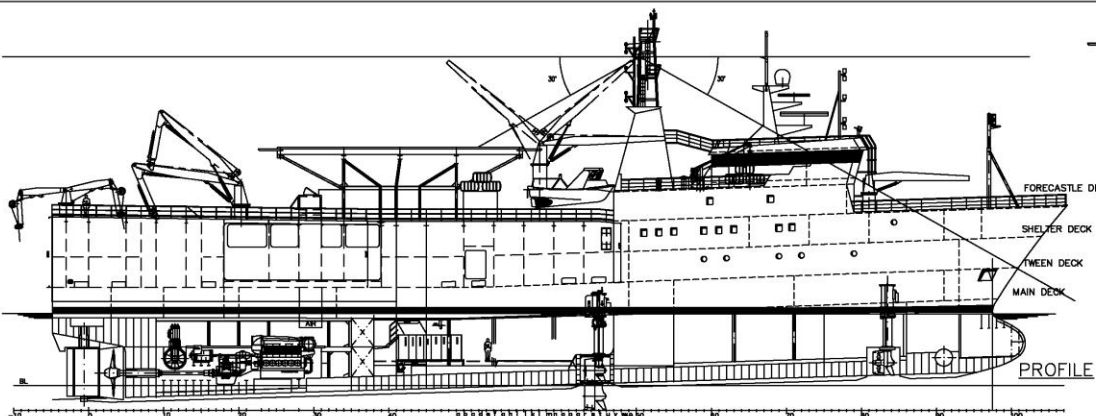
Fireman's outfits	Breathing apparatus 8
Life rafts	11x20 people, 1x12 people
Life jackets	116
Survival suits	64
Life buoys	17
MOB/FRC	Norsafe LOA 7,70 m, 10 person, 28 knots
Seismic Work Boat	Jemar Norpower 22' 5 pax
Fire detection system:	Eltek
Pumps:	3 engine room, 1 Azimuth room (bridge /local control)
Portable Fire Extinguishers:	52 x powder, 10 x water, 22 x CO2, 2 x foam
Hydrants and hoses:	28x hydrants 28 x 15 meter hoses
Inert gas / fixed systems:	CO2 engine-, cable store-, compressor-, incinerator-room,paint locker and galley ventilation duct,
Foam deluge system:	Gundeck, Pop-up system for Helideck
Engine room system:	CO2 and dry powder
Compressor room system:	CO2 and dry powder
Instrument room system:	Portable Fire extinguishers
Cable store system:	CO2 + dry powder & powder for fire in metal.
Galley system:	CO2 in ventilation duct
Accommodation System:	Fire hose, water, portable fire ext

COMMUNICATION

Portable VHF:	3 x XH851 and 6x SP 3520 SAILOR GMDSS
Portable UHF:	15 x Motorola, GP 340 and 5 x Motorola, GP328 and 9 x GP 344
Inmarsat B:	00870 764920165 00870 764920166 FAX 00873 764920167
GSM	Tel. +47 90 54 16 58 bridge
Vessel E-mail:	captain.nordic@vestlandoffshore.no

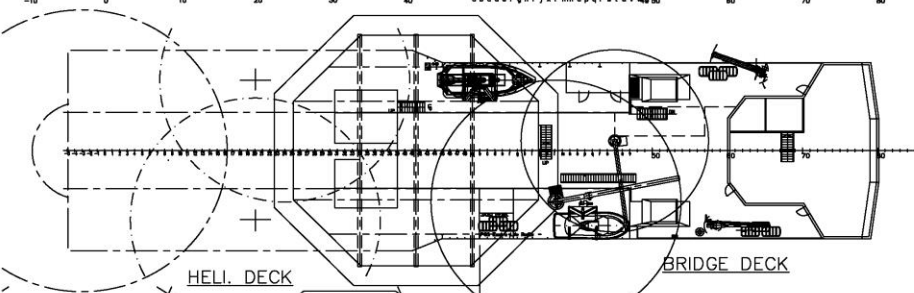
ACCOMMODATION

Accommodation:	54 person on Shelter Deck,
Forecastle	
Gymnasium:	Deck and Tween Deck
Gun Control Room:	On Main Deck
Wash And Change Room:	Tween Deck
Instrument Room:	Tween Deck
Offices/Conf.room for client:	Main Deck
Workshop:	Main Deck and Forecastle Deck Main Deck



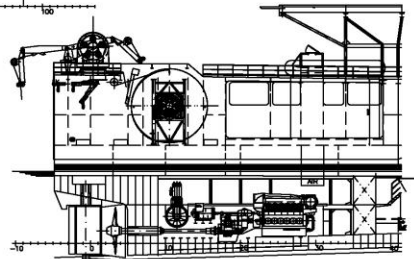
FRAME 34 SEEN FROM AFT

PROFILE

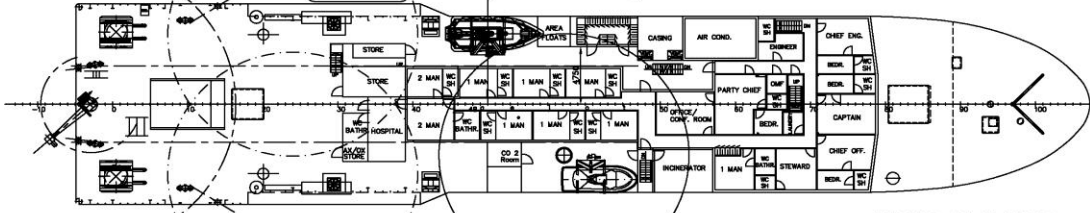


HELI. DECK

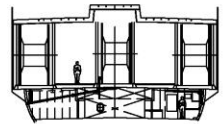
BRIDGE DECK



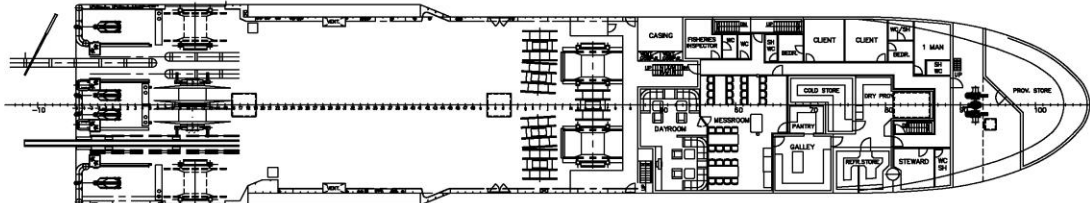
SEEN FROM STARBOARD SIDE



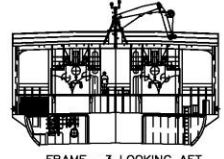
FORECASTLE DECK



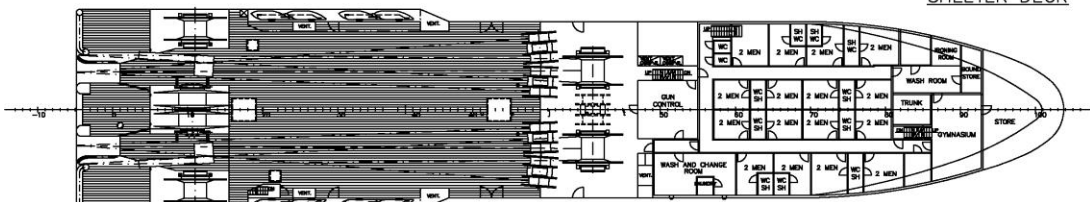
FRAME 5 SEEN FROM AFT



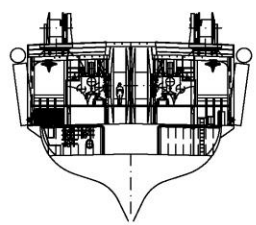
SHELTER DECK



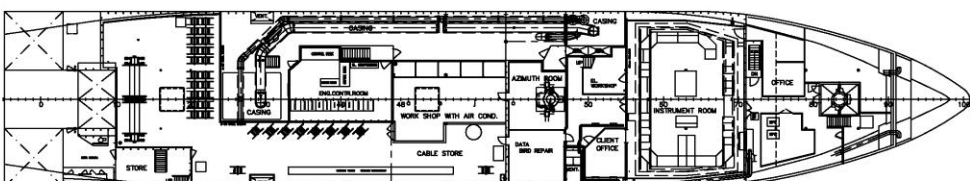
FRAME -3 LOOKING AFT



TWEEN DECK

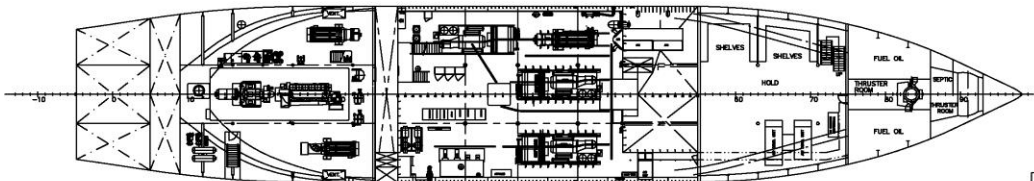


FRAME 15 LOOKING AFT



MAIN DECK

PRINCIPAL PARTICULARS	
LENGTH OVER ALL:	81,10 m
LENGTH BETW. PERP.:	72,30 m
BREADTH MOULDED:	14,50 m
DEPTH TO MAINDECK:	5,75 m
DEPTH TO TWEENDECK:	8,25 m
DEPTH TO SHIELD DECK:	10,75 m
DEPTH TO FORECASTLE DECK:	13,25 m
FRAME SPACING:	0,60 m



TANKTOP

CLASS: DnV + 1A1 - E0 - HELDK - ICE 1A

OWNER: SHIPMAN A/S with Tor Østervold

		1472	K
101-VG100			
DATE	10.09.95	SCALE	1:200
DESIGNER	K.A. Torstved	DATE	
GENERAL ARRANGEMENT SEISMIC SURVEY 81,10m VESSEL UPGRADE FROM 5 TO 6 STREAMER.		DESIGNER	
DWG FILE	101vg100.dwg	PLT DATE	