

## MV "Vestland Artemis"

<b>SHIP DESIGN</b>	VS 485 MK II		
<b>CLASSIFICATION</b>	DET NORSKE VERITAS		
<b>BUILDER</b>	HELLESØY VERFT AS		
<b>DELIVERY</b>	2011		
<b>IMO NUMBER</b>	9544516		
<b>PORT OF REGISTRY</b>	Bergen		
<b>FLAG</b>	NIS (Norway)		
<b>MMSI</b>	257 055 000		
<b>CALL SIGN</b>	LACM8		
<b>INMARSAT C</b>	425705510 / 425705511		
<b>VSAT</b>	+ 47 2615639-Engine / 2615640/41/42-Bridge		
<b>MOBILE NORWAY</b>	+ 47 909 14 574		
<b>E-Mail</b>	<a href="mailto:captain.artemis@vestlandoffshore.no">captain.artemis@vestlandoffshore.no</a> <a href="mailto:bridge.artemis@vestlandoffshore.no">bridge.artemis@vestlandoffshore.no</a>		
<b>OWNER:</b>	GSE Shipping 1 KS	<b>MANAGER:</b>	VESTLAND MANAMENT AS, N-5384 TORANGSVÅG,
<b>MAIN DIMENSIONS</b>		<b>CLASS NOTATIONS</b>	
Length O.A	85,00 M	DNV1A1, ICE-C, OILREC, NOFO 2009,SF, LFL*, COMF-V(3)C(3), E0, DYNPOS-AUTR, NAUT-OSV(A), CLEAN DESIGN, DK(+), HL(2.8), COAT-PSPC(B)	
Length P.P	77,70 M		
Breadth	20,0 M		
Max Draft	6.80 M		
Gross Tonnage	4 344 T		
Net Tonnage	1 800 T		
Deadweight	5483 T		



# OUTLINE SPECIFICATION

## MACHINERY AND PROPELLER PLANTS

Main Engines/Generators : 4 x 1825 kw CAT 3516B-DSG  
Emergency Generator: 1 x 265 kw Volvo Penta D9A MGRC  
Main Propulsion: 2 x 2300 kw SteerProp SP 35 CRP  
FWD Azimuth: 1 x 880 kw Brunvoll CPP  
FWD Tunnel Thrusters: 2 x 1000 kw Brunvoll CPP

## CARGO CAPACITIES NOFO 2009

Deck Cargo: 2 800 Tons  
Deck Area: 1004 m<sup>2</sup>  
59.8 x 16.8 meter free space  
Deck Strength: 10 Tons/m<sup>2</sup>  
Fuel Oil: 903 m<sup>3</sup>, in 5 tanks  
Liquid Mud (SG 2.8): 693.7 m<sup>3</sup>, in 6 tanks  
Agitators: Fitted in each mud tanks  
Brine (SG 2.5): 418 m<sup>3</sup>, in 2 tanks  
Base Oil: 203.8 m<sup>3</sup>, in 2 tanks  
Pot Water: 955 m<sup>3</sup>, in 10 tanks  
Drill Water/Ballast: 2546 m<sup>3</sup>, in 24 tanks  
Dry Bulk: 330m<sup>3</sup> in 6 tanks  
Methanol: 145 m<sup>3</sup>, in 1 tank  
Special Products: 146 m<sup>3</sup>, in 1 tank  
Slop: 186 m<sup>3</sup>, in 2 tanks  
ORO: 1803 m<sup>3</sup>, 8 x 100 m<sup>3</sup>/hour  
Cement/Barite/Bentonit: 330 m<sup>3</sup>, in 6 tanks

## Discharge

Fuel Transfer Capacity: 2 x 150 m<sup>3</sup>/hour, @ 9 bar  
Flowmeter with Printer  
Brine (SG 2.5): 2 x 150 m<sup>3</sup>/hour @ 24/11 bar  
Base Oil: 2 x 100 m<sup>3</sup>/hour @ 9 bar  
Pot Water: 2 x 150 m<sup>3</sup>/hour @ 9 bar  
Drill water/Ballast: 2 x 150 m<sup>3</sup>/hour @ 9 bar  
Methanol: 1 x 75 m<sup>3</sup>/hour @ 9 bar  
Special Product: 1 x 75 m<sup>3</sup>/hour @ 9 bar  
Slop: 2 x 100 m<sup>3</sup>/hour 24/11 bar  
Cement/Barite/Bentonit: 2 x 30 m<sup>3</sup>/hour @ 6.5 bar  
ORO: 8 x 100 m<sup>3</sup>/hour @ 9 bar

## ENVIRONMENT AND CARGO CONTROL PLANTS

Incinerator: Saniterm SH 20 SM/SR  
Steam Generator: Parat Halvorsen AS 1600 kw  
Hot Liquid Cargo Tank: 1 x 146 m<sup>3</sup>  
Tank Cleaning: Per Gjerdrum AS  
Special Cargo Tanks: Stainless Steel Tanks for Methanol  
Inert Gas System: N2 Generator, Membrane Separation  
Cargo Manifolds: Centre / Aft each side inside "Safe haven"

## NAVIGATION

Radar 10 cm: Furuno FAR-2137S  
Arpha radar 3 cm: Furuno FCR-2117  
Autopilot: Simrad AP-50  
Gyro: 3 x Simrad GC-80  
DP system: Kongsberg DP II K-pos 22  
Joystick: Kongsberg C-Joy Constan  
GPS: Furuno GP-150  
AIS: Furuno FA-150  
Speed log: Skipper EML224  
Echo sounder: 1 x Furuno FE-700  
Digital speed and distance repeater: Skipper IR300  
Electronic chart computer ECDIS: Furuno Tecdis T-2137

## SPEED AND FUEL CONSUMPTION

Full speed: 15.0 knots 24.0 m<sup>3</sup>/24 hours  
Service speed: 12.5 knots 16.0 m<sup>3</sup>/24 hours  
Economic speed: 11.0 knots 12 m<sup>3</sup>/24 hours  
DP operation: 5.6 m<sup>3</sup>/24 hours at position keeping  
Harbor mode: 2m<sup>3</sup>/24 hours

## CARGO HANDLING EQUIPMENT

1 x TTS Marine GPK knuckle crane, SWL 3 tons/13 meter  
1 x TTS Marine GPT telescopic jib, SWL 3 tons/13 meter  
2 x Capstans aft, NDM SWL 8 tons  
6 x Cargo Securing Winches, NDM SWL 3 tons  
2 x Tugger Winch, NDM TU SWL 15 tons  
12X Reefer points on board  
2 X 440V 3P+;32A-7H-500V  
6 X 220V 2P+;16A-6H-250V  
4 X 110V;32A-4H-110/130V

## LIFE SAVING EQUIPMENT

Ship Certificate: 25 persons  
Life Rafts: 4 x 25 persons Unitor  
MOB: 1 x NORSAFE Mako 655 Waterjet FRB  
MOB Davit: 1 x HLT 3500 TTS  
Survival Suits: 31 SOLAS Immersion Suits

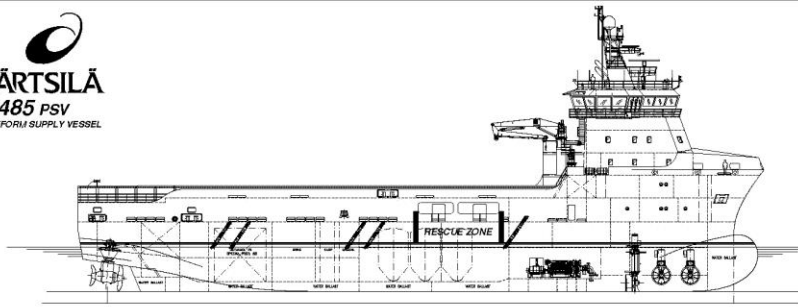
## COMMUNICATION

Navtex: Furuno NX-700 B  
Radar Transponder: 2 x Jotron Tron SART  
DSC Terminal: Furuno FS 2570 C  
AIS: Furuno FA 150  
EPIRB manual: Jotron 45 SX  
EPIRB Free Float: Jotron Tron 40 S Mk II  
Radio Station: SSB, MF, HF, Furuno FS 2570C  
VHF Portable: 3 x Jotron Tron TR 20 GMDSS  
VHF Station: Furuno FM 8800 S  
UHF Portable: 5 x Motorola GP 340  
Inmarsat C: Furuno Felcom 15  
Intercom: Zenitel ACM 144 66/VO  
Sound System: Vingtor VSS 111  
Emergency: Vingtor VSP 211 L  
PA System: Zenitel VPA 120, 240 and 400

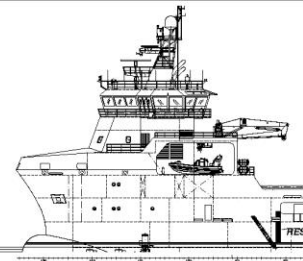
## ACCOMMODATION

Outfitted for 25 persons in spacious and comfortable facilities  
Single Cabins: 9 with bathrooms  
Double Cabins: 8 with bathrooms  
Hospital: 1 Highest standard  
Office: 1 fully outfitted  
Day Room: 2 comfortable outfitted  
Gymnasium: 1 fully outfitted  
Entertainment: In Day Rooms and all Cabins  
Antiroll Tank: 1 x 440 m<sup>3</sup> + 1 x 160 m<sup>3</sup>

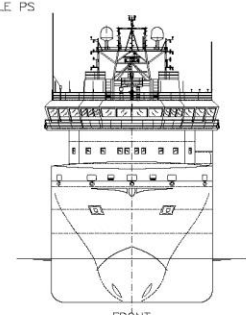
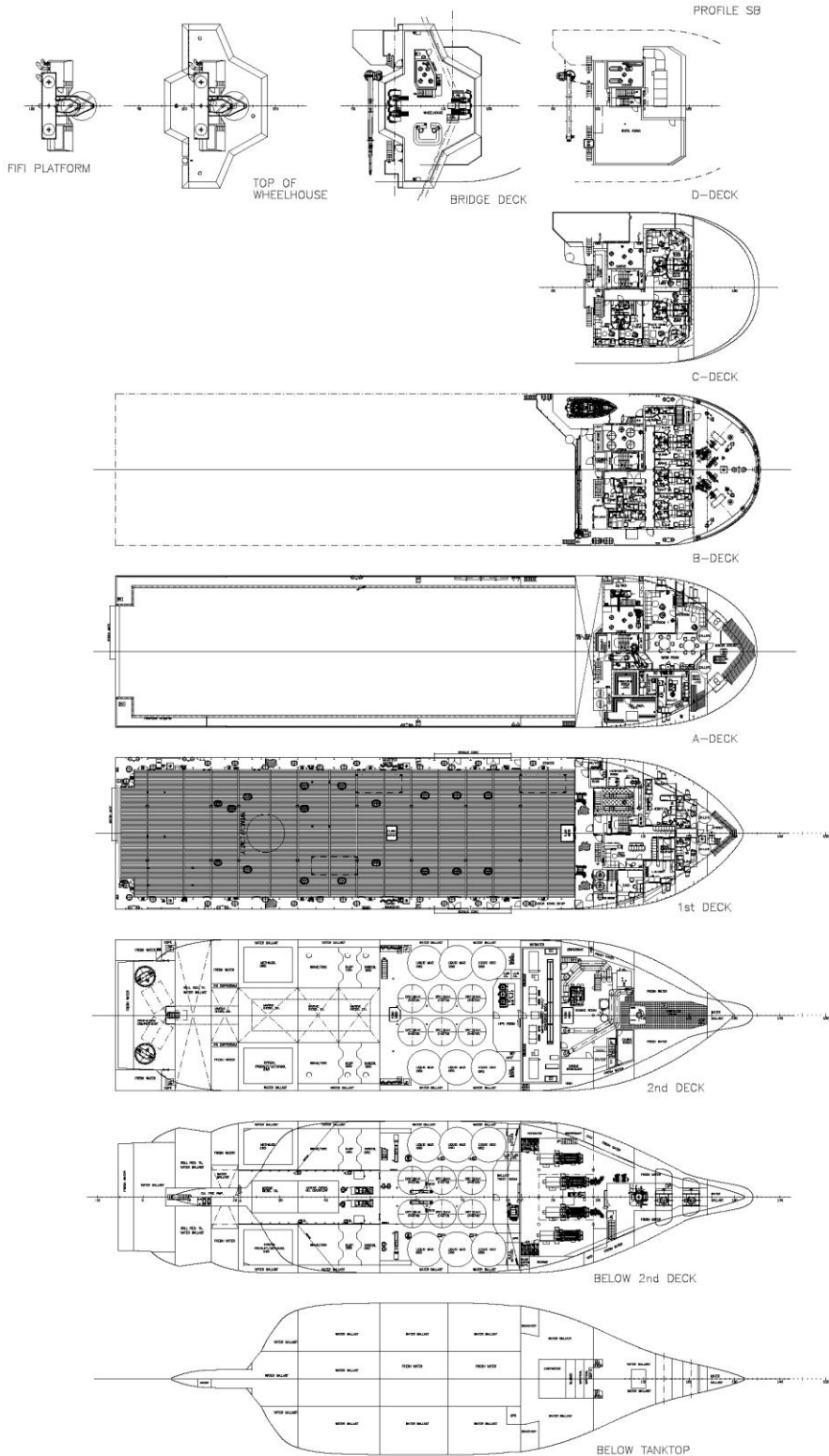




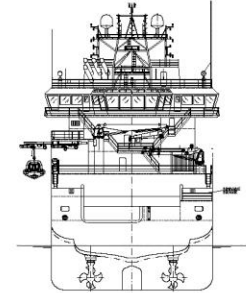
120.00.000.000.00.00  
 120.00.000.000.00.00  
 120.00.000.000.00.00  
 120.00.000.000.00.00  
 120.00.000.000.00.00  
 120.00.000.000.00.00  
 120.00.000.000.00.00  
 120.00.000.000.00.00



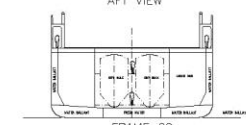
PROFILE PS



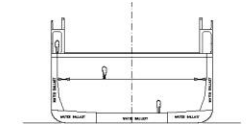
FRONT



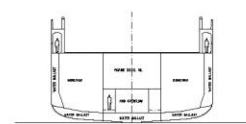
AFT VIEW



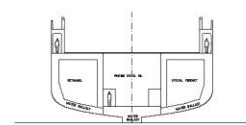
FRAME 69



FRAME #55



FRAME 38



FRAME 28

CASIN PLAN

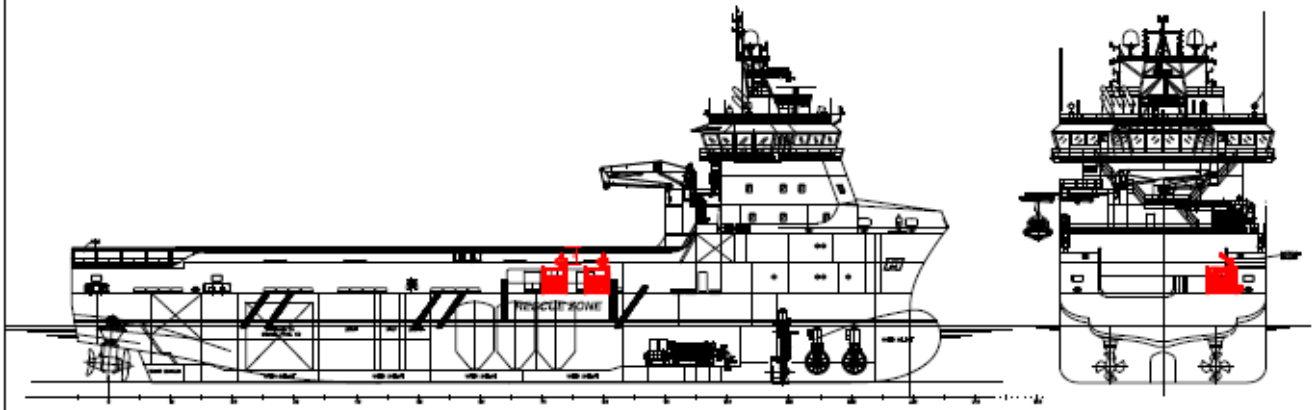
	1st Cabin	2nd Cabin	3rd Cabin
C-DECK:	4cabin	8	8
B-DECK:	7cabin	8	10
A-DECK:	-	-	2
TOTALS:	11cabin	16cabin	20cabin

PRINCIPAL PARTICULARS:

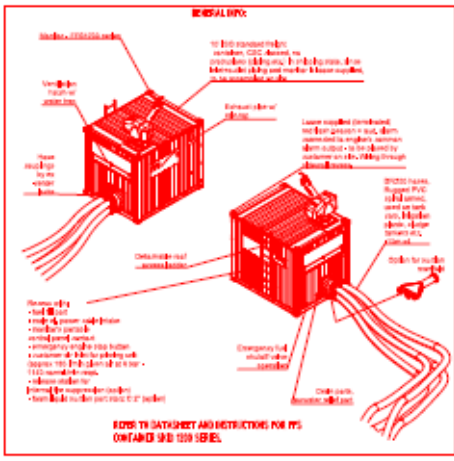
LENGTH OVER ALL:	85.00 m
LENGTH BETW. PERP.:	77.70 m
BREADTH:	20.00 m
DEPTH TO 1st DECK:	8.60 m
DEPTH TO 2nd DECK:	5-4.0 m
DECK AREA:	1000 m <sup>2</sup>
FRAME SPACING:	600 mm

PLATFORM SUPPLY VESSEL VS485 PSV		101	
GENERAL ARRANGEMENT		101	
WÄRTSILÄ Ship Design		4253	
101-001		1/1	





1st DECK



REFERENCE DRAWINGS	
CSO - CONSTRUCTION DRAWINGS OF OFFSHORE	1000000000
General Arrangement	30-045/100-285

01	2	FFR Container systems	Drawing / Dim.
Item	Qty	Description	
Material Management	Rev: 01	10/2017	10/2017
Material Area	General Arrangement		FFS
Code			A101910G1
Version	Ethanol FFR System		Rev: 01 Date: 10/2017

