

## **MV “VESTLAND CYGNUS”**

<b>SHIP DESIGN</b>	<b>VS 485 MK III</b>
<b>CLASSIFICATION</b>	<b>DNV GL / No: 33567</b>
<b>BUILDER</b>	<b>FJELLSTRAND AS, no 1689</b>
<b>PORT OF REGISTRY</b>	<b>NASSAU</b>
<b>FLAG</b>	<b>BAHAMAS</b>
<b>OFFICIAL NUMBER</b>	<b>7000789</b>
<b>MMSI</b>	<b>311000386</b>
<b>IMO NUMBER</b>	<b>9714214</b>
<b>DELIVERY</b>	<b>Q1 – 2015</b>
<b>REBUILDING</b>	<b>Q3- 2016</b>
<b>CALL SIGN</b>	<b>C 6 B W 7</b>

<b>OWNER:</b>	<b>NORSIDE WIND AS</b>	<b>MANAGER: VESTLAND MANAGEMENT AS</b>
	<b>Co/ VESTLAND MANAGEMENT AS</b>	<b>N-5384 TORANGSVÅG</b>
	<b>N-5384 TORANGSVÅG</b>	

### **MAIN DIMENSIONS**

Length O.A	85,60 M
Length P.P	77.70 M
Breadth	22.40 M
Max Draft	6.30 M
Gross Tonnage	6233 T
Net Tonnage	1870 T
Deadweight	3472 T
Lightweight	4157 T

### **CLASS NOTATIONS DNV**

✕ 1A1, SPS , Clean(Design) , COAT- PSPC(B)  
COMF (C-3, V-3) , Crane(N) , DK(+ )  
DYNPOS (AUTR) , E0 , HL(2.8) , Ice(C)  
NAUT (OSV(A)) , SF



# OUTLINE SPECIFICATION

## MACHINERY AND PROPELLER PLANTS

Main Engines/Generators: 4 x Wartsila 9L20 1665kw  
Emergency Generator: Volvo Penta 175 kW  
Main Propulsion, fixed pitch: 2 x Steerprop propellers 2300 kW  
FWD Azimuth: 1 x Brunvoll 880 kW  
FWD Tunnel Thrusters: 2 x Brunvoll 1000 kW

## CREW TRANSFER EQUIPMENT

1 x Uptime Active Motion Compensated Gangway 23.4m / 2.5Hs

## CARGO CAPACITIES

Deck Cargo: 650 Tons  
Deck Area: 450 m2  
59.8 m x 16.8 m free space  
Deck Strength: 10 Tons/m2  
Fuel Oil: 897,4 m3,  
Liquid Mud (SG 2.8): 694.8 m3, Agitators in all tanks  
Brine (SG 2.5): 363.2 m3,  
Base Oil: 197.2 m3,  
Pot Water: 993.3 m3,  
Drill Water/Ballast: 2785.4 m3,  
Glycol: 292.5 m3,  
  
Slop: 182.9 m3 (through Liquid Mud manifold)  
Cement/Barite/Bentonite: 330 m3

## ENVIRONMENT AND CARGO CONTROL PLANTS

Incinerator: Ulmatec Pyro  
Cement plant: Van Aalst  
All pumps: Ing. Per Gjerdrum  
Electrical Boiler: Parat Halvorsen AS  
Equipment on deck: Norwegian Deck Mach AS  
Tank Cleaning: Per Gjerdrum AS  
Special Cargo Tanks: Stainless Steel Tanks for Glycol  
Cargo Manifolds: AFT SB

## NAVIGATION

Bridge Consoles: Steinsvik Aft, Fwd and both Wings  
Operation Control Office: Located on Bridge  
Autopilot: Simrad AP 70  
DP System: Kongsberg K Pos DP 2  
Joystick System: Kongsberg C-Joy Constant  
DP Motion System 1: Sea Tex MRU 2  
DP Motion System 1: Sea Tex MRU 5  
Cyscan: Kongsberg Lazer Mk 4,2  
HiPAP: HiPAP 502 Kongsberg  
DGPS: 2 x Furuno GP 150  
Wind Sensor: 2 x Kongsberg Maritime  
Radar 1: 1 x 10 cm/ S band, IMO ARPA  
Radar 2: 1 x 3 cm/ X band w/mini ARPA  
Oil Radar: According to NOFO Standard 2009.  
Echo Sounder: Furuno FE 700  
Gyro: 3 x Simrad GC 80  
Speed Repeater: Skipper IR 300  
VDR: Furuno VR 3000  
GPS: 2 x Furuno GP 150  
Bridge Watch: VICO system NAUT/OSV  
ECDIS: Furuno Tecdis T - 2137  
Speed log: Skipper EML 224

## SPEED AND FUEL CONSUMPTION

Full speed: 14,0 knots 20.2 mt/24hrs  
Service speed: 11.5 knots 10,0 mt/24 hrs  
Economic speed: 10.0 knots 7,3 mt/24 hrs  
DP operation: 5,3 mt/24 hrs at position keeping 1,6m Hs  
St-by at field: 2,9 mt/24 hrs at one engine  
Harbor mode: 2.0 mt/24 hrs

## CARGO HANDLING EQUIPMENT

1 x Palfinger DK1600C SWL 100 tons/37 meters  
1 x Palfinger PK4002M SWL 720 kg / 20.5 meters  
2 x Norwegian Deck Mach AS, 10 t capstans aft  
2 x Norwegian Deck Mach AS, cargo securing winches  
  
1 x Framo Automatic Anti Heeling System Vertical Pump RBP300-3 / 1230m3/h/55kW  
Reefer points on board available :  
4x 220V x 16A  
6 x 220V x 16A  
2 x 440V x 16A

## LIFE SAVING EQUIPMENT

Ship Certificate: 134 persons  
Life Rafts: Capacity for 40 persons, each side  
Lifeboats: Harding 2 x 68 persons  
Lifeboat Davit: 2 x Harding SOLAS approved  
MOB: Norsafe Rescue/MOB boat (28 ft) for 10 persons  
MOB Davit: Red Rock for FRB SOLAS approved  
Survival Suits: 134 immersion suits  
4 x Full dry insulated for FRB  
Survival suits according to rules

## COMMUNICATION

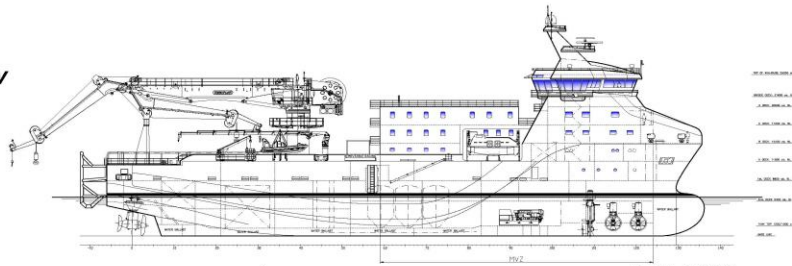
Navtex: Furuno NX-700 B  
Radar Transponder: 2 x Jotron Tron SART20  
DSC Terminal: Furuno FS-2570 C  
AIS: Furuno FA 150  
EPIRB manual: Jotron Tron 60S  
EPIRB Free Float: Jotron Tron 60S  
Radio Station: SSB, MF, HF, Furuno FS-1575  
VHF Portable: 3 x Jotron Tron TR 20 GMDSS  
VHF Station: Furuno FM-8900 S  
UHF Portable: 7 x Motorola GP 840  
Inmarsat C: Furuno Felcom 18  
Intercom: Zenitel ACM 144 66/VO  
Sound System: Vingtor VSS 111  
Emergency: Vingtor VSP 211 L  
PA System: Zenitel VPA 120, 240 and 400  
  
Satellit Communication: MARLINK - SEATEL VSAT 6012  
VSAT Phone: 0047 23677230 / 0047 23677237  
Vessel E-mail: [captain.cygnus@vestlandoffshore.no](mailto:captain.cygnus@vestlandoffshore.no)  
[bridge.cygnus@vestlandoffshore.no](mailto:bridge.cygnus@vestlandoffshore.no)

## AS BUILT ACCOMMODATION

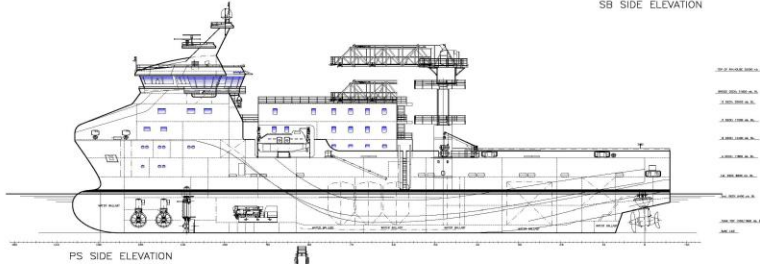
Outfitted for 22 persons in spacious and comfortable facilities  
Single Cabins: 12 with bathrooms  
Double Cabins: 5 with bathrooms  
Hospital: 1 Highest standard  
Office: 1 with furniture  
Gymnasium: 2 fully outfitted  
Entertainment: In Day Rooms and all Cabins

## EXTENDED ACCOMMODATION

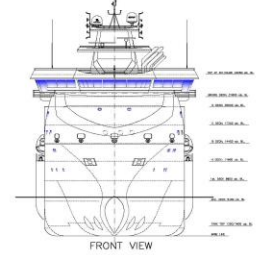
Outfitted for 104 persons in spacious and comfortable facilities  
Double Cabins: 52 with bathrooms  
Day Room: 2 comfortable outfitted  
Cinema: 1 Hall  
Offices: 4 offices with 15 working stations



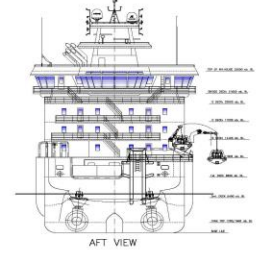
SB SIDE ELEVATION



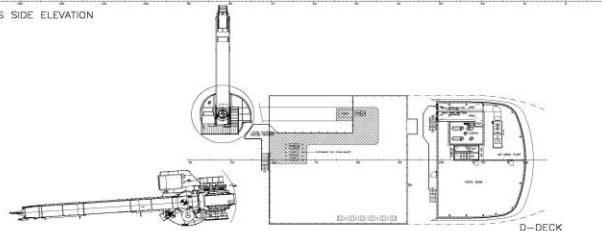
PS SIDE ELEVATION



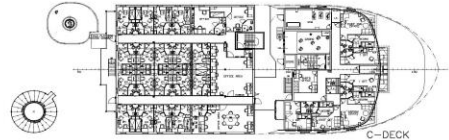
FRONT VIEW



AFT VIEW



D-DECK



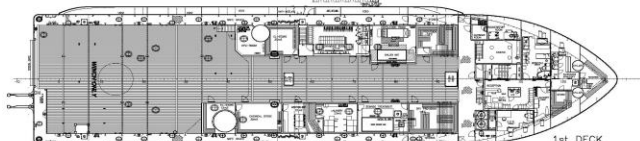
C-DECK



B-DECK



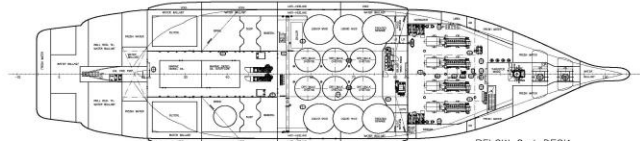
A-DECK



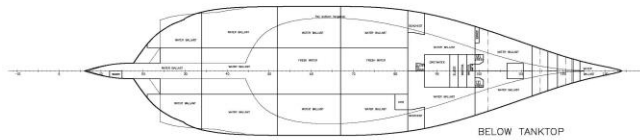
1st DECK



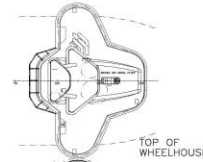
2nd DECK



BELOW 2nd DECK



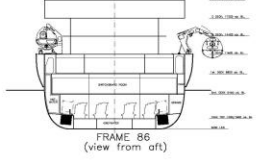
BELOW TANKTOP



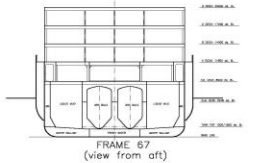
TOP OF WHEELHOUSE



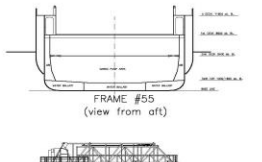
BRIDGE DECK



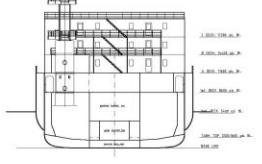
FRAME #6  
(view from aft)



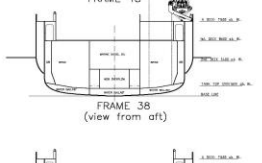
FRAME #7  
(view from aft)



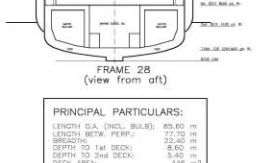
FRAME #55  
(view from aft)



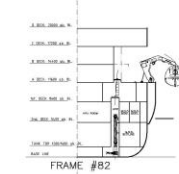
FRAME #48



FRAME #38  
(view from aft)



FRAME #28  
(view from aft)



FRAME #82

CABIN MODULE			
	NO.	AREA	DATE
C-DECK	1	10.00m <sup>2</sup>	10/2013
B-DECK	2	10.00m <sup>2</sup>	10/2013
A-DECK	3	10.00m <sup>2</sup>	10/2013
1st DECK	4	10.00m <sup>2</sup>	10/2013
2nd DECK	5	10.00m <sup>2</sup>	10/2013

CABIN PLAN			
	NO.	AREA	DATE
C-DECK	1	10.00m <sup>2</sup>	10/2013
B-DECK	2	10.00m <sup>2</sup>	10/2013
A-DECK	3	10.00m <sup>2</sup>	10/2013
1st DECK	4	10.00m <sup>2</sup>	10/2013
2nd DECK	5	10.00m <sup>2</sup>	10/2013

**PRINCIPAL PARTICULARS:**  
 LENGTH O.A. (INCL. BULB): 80.80 m  
 LENGTH B.W.P. (PERF.): 77.00 m  
 BREADTH: 22.40 m  
 DRAFT: 8.40 m  
 DEPTH TO 1st DECK: 8.40 m  
 DECK AREA: 444 m<sup>2</sup>  
 WINDFARM DECK AREA: 224 m<sup>2</sup>  
 MEZANINE DECK AREA (APPROX): 100 m<sup>2</sup>  
 FRAME SPACING: 800 (mm)

CLASS: DNV, HULL, SURF, DE-C, SHIPING APLS, CLEAN DESIGN, ES, HULL SURF, CLEAN WINDFARM, SP Register (classifications 4013 and 1432) Crane

WIND FARM SERVICE VESSEL		VS485 WSV mk.III		KVLASSTRAND	
GENERAL ARRANGEMENT		1:800		101	
Wärtsilä Ship Design		4778003		F	
WÄRTSILÄ		101-001		1/1	