

# M/V Nordic Explorer

<b>SHIP DESIGN</b>	Seismic Vessel
<b>CLASSIFICATION</b>	Rina
<b>BUILDER</b>	Langsten Shipyard, Tomrefjorden, Norway
<b>IMO NUMBER</b>	8517449
<b>PORT OF REGISTRY</b>	Nassau
<b>FLAG</b>	Bahamas
<b>DELIVERY</b>	21.02.1986
<b>CALL SIGN</b>	C6TU3

<b>OWNER:</b>	ØSTERVOLD SEISMIKK AS N-5384 TORANGSVÅG	<b>MANAGER:</b>	VESTLAND MANAGEMENT AS N-5384 TORANGSVÅG
---------------	--	-----------------	---

<b>MAIN DIMENSIONS</b>		<b>CLASS NOTATIONS</b>
Length O.A	81,1 m	*1A1 E0 HELDK Ice(1A)
Length P.P	73,0 m	
Breadth	16,5 m	
Draft	8,1 m when fully loaded	
Gross Tonnage	3 861 T	

Full compliance with SOLAS, Marpol 73/78 and other relevant maritime and industrial standards, E&P Forum and IAGC requirements. Further documentation and certification available on request.



## Maritime Vessel Specification

### Machinery

Propulsion type:	Wickman 12Wx28 3960kw 12V28B Two step RPM 600-660 MGO
Propeller:	Wickman variabel pitch propeller 9 PR4-12, 4 blade Volda Gear reduction 4.41-1
Thrusters	Bow: 1 Brunvoll tunnel thruster 360 kW Stern: 1 Brunvoll tunnel thruster 590 kW Secondary propulsion: 2 Azimuth thruster 850 kW
Power Plant:	2 x Stamford MHC 734 F2 1072kw 2 x Stamford MHC 734 H2 1448 kw
Other Machinnery:	1 x CAT 3516 2 x CAT 3512
Seismic Compressors:	3 x LMF. 420E/VCS2413W14, 42,4 m <sup>3</sup> / min. 138 bar Compresossor with frequency converter

### Speed and Fuel consumption

Speed:	Max 12 knots
Endurance seismic days:	31/38 depending on fuel consumption

### Vessel Navigation Equipment

Auto Pilot:	Robertson AP 9 MK III, Robtrack
Radar :	1 x Furono FR 2827 X-band ice radar JRC JMA 5332-12m S-band ice radar
Echosounder:	Furuno FE 700 Depth 800 meter Simrad EA 600 Depth 9000 meter
Water speed log:	FURUNO Doppler speed log DS-80
Gyro Compass	Meridian Surveyor
Ecdis:	TECDIS 1, C-MAP, w/ ARPA, AIS connected
Dopler log:	Furuno DS-80

Helideck: 19 m Super Puma 332 L1/Bell 212ST, Bell 412

### Capacities

Fuel:	1400 m3
Lube Oil:	24 m <sup>3</sup>
FW:	110 T
Fresh water maker:	16 m3/day (Alfa Laval) 15m3/day (Reversed Osmosis)

### Life Saving Equipment

Fireman's outfits	Breathing apparatus 8
Life rafts	11x20 people, 1x12 people
Life jackets	116
Survival suits	64
Life buoys	17
MOB/FRC	Norsafe LOA 7,70 m, 10 person, 28 knots
Seismic Work Boat	Jemar Norpower 22' 5 pax

## Fire Fligh Systems

Fire detection system:	Eltek
Pumps:	3 engine room, 1 Azimuth room (bridge /local control)
Portable Fire Extinguishers:	52 x powder, 10 x water, 22 x CO2, 2 x foam
Hydrants and hoses:	28x hydrants 28 x 15 meter hoses
Inert gas / fixed systems:	CO2 engine-, cable store-, compressor-, incinerator-room paint locker and galley ventilation duct,
Foam deluge system:	Gundeck, Pop-up system for Helideck
Engine room system:	CO2 and dry powder
Compressor room rystem:	CO2 and dry powder
Instrument room rystem:	Portable Fire extuing
Cable store system:	CO2 + dry powder & powder for fire in metal.
Galley system:	CO2 in ventilation duct
Accommodation System:	Fire hose, water, portable fire ext

## Communication

Portable VHF:	3 x XH851 and 6x SP 3520 SAILOR gmdss
Portable UHF:	15 x Moterola, GP 340 and 5 x Moterola, GP328 and 9 x GP 344
Inmarsat B:	00870 764920165 00870 764920166 FAX 00873 764920167
GSM	Tel. +47 90 54 16 58 bridge
Vessel E-mail:	<a href="mailto:captain.nordic@vestlandoffshore.no">captain.nordic@vestlandoffshore.no</a>

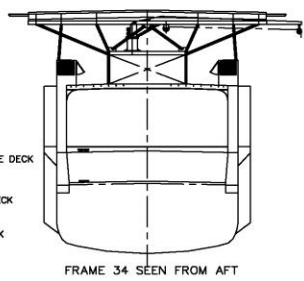
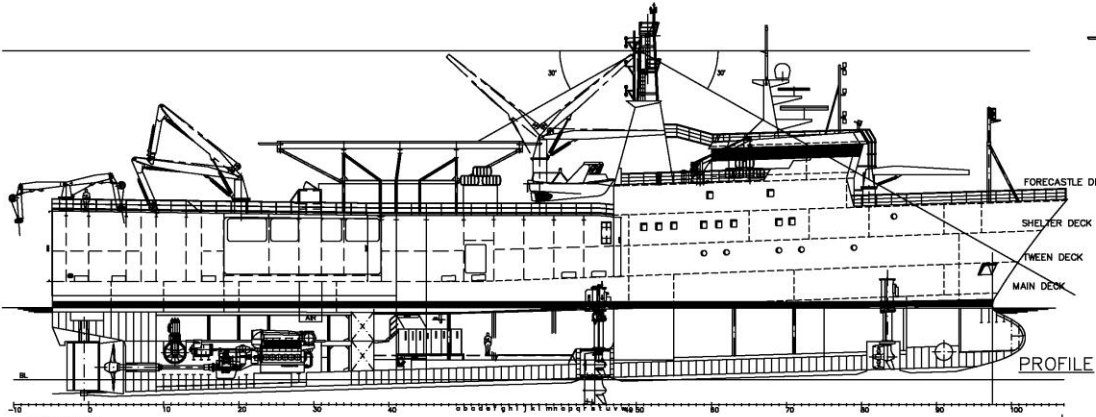
## Accommodation

Accommodation:	54 person on Shelter Deck, Forecastle Deck and Tween Deck
Gymnasium:	On Main Deck
Gun Control Room:	Tween Deck
Wash And Change Room:	Tween Deck
Instrument Room:	Main Deck
Offices/Conf.room for client:	Main Deck and Forcastle Deck
Workshop:	Main Deck

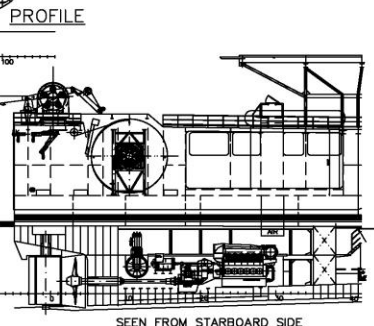
## **Seismic Source Spesification**

### Energy Source

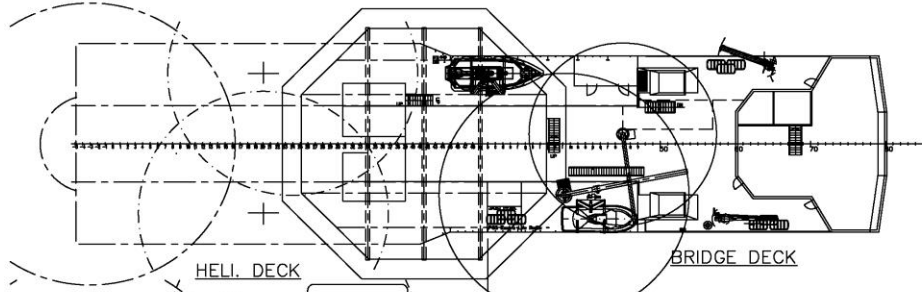
Manufacturer and type	Bolt 1900 LLXT
Effective volume	2x3090 cu.in / 2 x 4130 cu.in - GeoSource (standard array(s))
Maximum numb. of sub-arrays	6
Standard array depth(s)	5 - 9mm + 9m
Position of depth transducers	Front and tail of subarray
Working pressure	2000 psi
Type of firing sensors	Pressure activated
Position of firing sensors	Each gun
Type of firing synchroniser unit	RTS BigShot
Timing resolution	0.1ms ms
Timing accuracy	+/- 1.0ms
Position of near field phones	Each single gun and cluster, 7 per sub-array
Air compressors capacity	3x1483 cfm
Number of air compressors	3



FRAME 34 SEEN FROM AFT

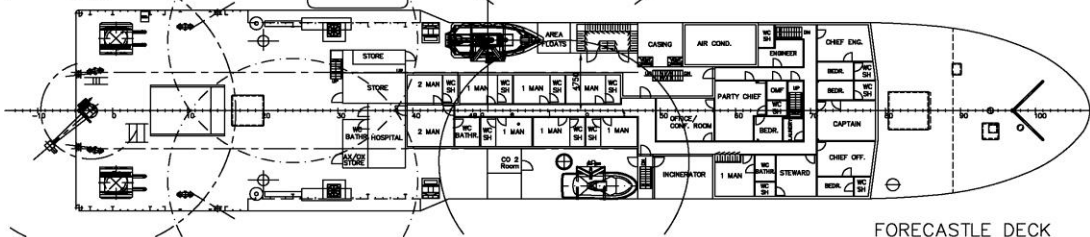


SEEN FROM STARBOARD SIDE

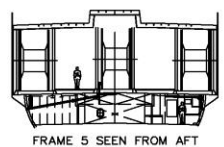


HELI. DECK

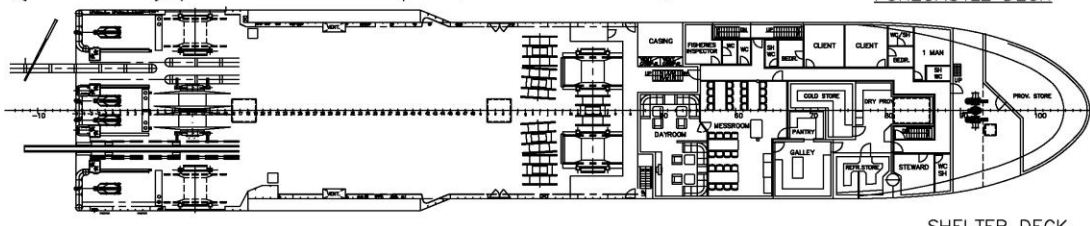
BRIDGE DECK



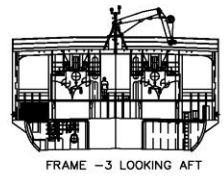
FORECASTLE DECK



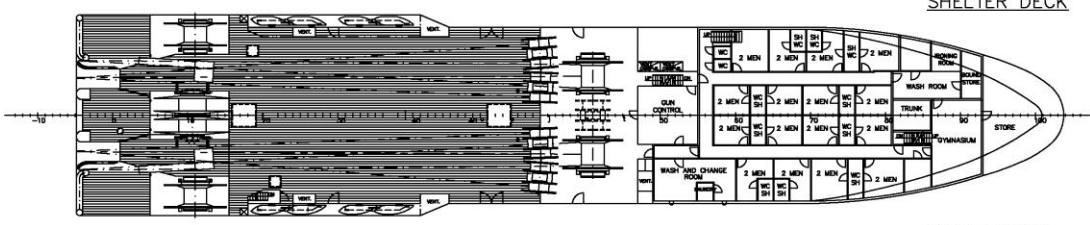
FRAME 5 SEEN FROM AFT



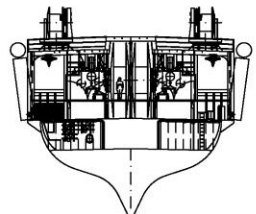
SHELTER DECK



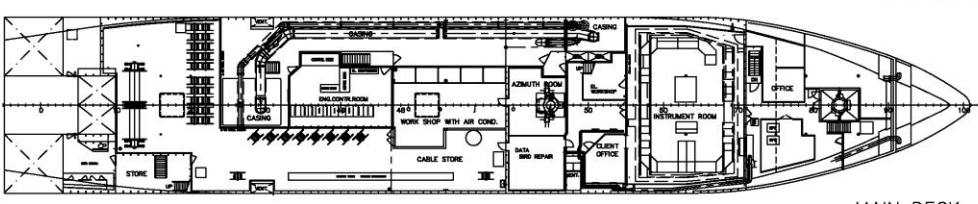
FRAME -3 LOOKING AFT



TWEEN DECK

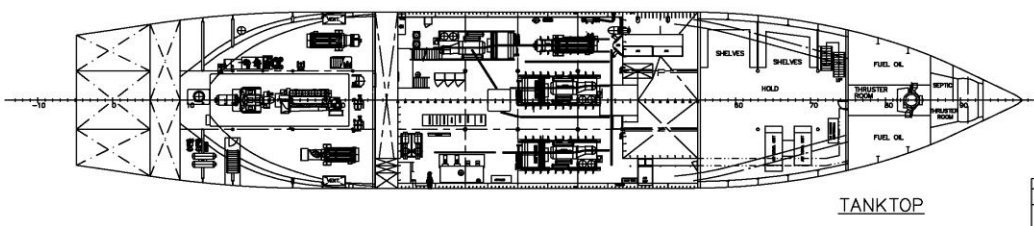


FRAME 15 LOOKING AFT



MAIN DECK

PRINCIPAL PARTICULARS	
LENGTH OVER ALL:	81,10 m
LENGTH BETW. PERP.:	72,30 m
BREADTH MAXIMUM:	14,50 m
DEPTH TO MAINDECK:	5,75 m
DEPTH TO TWEENDECK:	8,25 m
DEPTH TO SHELTERDECK:	10,75 m
DEPTH TO FORECASTLE DECK:	13,25 m
FRAME SPACING:	0,60 m



TANKTOP

CLASS: DnV + 1A1 - E0 - HELDK - ICE 1A

OWNER: SHIPMAN A/S with Tor Østervold

1472  
101-VG100

DATE: 10.09.98	BY: A. Torngren	SCALE: 1:200	PROJECT: 1472
GENERAL ARRANGEMENT		SEISMIC SURVEY 81.10m VESSEL	UPGRADE FROM 5 TO 6 STREAMER.
DWG FILE: 101vg100.dwg	PLT FILE: 101vg100.plt	DATE: 10.09.98	BY: A. Torngren