

MV “VESTLAND MISTRAL”

SHIP DESIGN	VS 485 MK II	
CLASSIFICATION	Technical - DET NORSKE VERITAS	/ ISM,ISPS,MLC – BUREAU VERITAS
BUILDER	HELLESØY VERFT AS, HULL NO 149	
DELIVERY	1st of JULY 2012	
PORT OF REGISTRY	Nassau	
FLAG	Bahamas	
Official Number	7000669	
IMO NUMBER	96 20 982	
Call Sign:	C6BG5 (Charlie, Six, Bravo, Golf, Five)	
MMSI No:	311 000 256	
INMARSAT C N:	4311020094	
INMARSAT C N:	4311020095	
VSAT	0047 21 54 90 18	
Mobile Norway	0047 46 90 79 06	
E-Mail	captain.mistral@vestlandoffshore.no	

OWNER:	VESTLAND OFFSHORE AS
REGISTERED OWNER:	VESTLAND PSV AS ,N-5384 TORANGSVÅG, NORWAY
MANAGER:	VESTLAND MANAMENT AS, N-5384 TORANGSVÅG, NORWAY

MAIN DIMENSIONS

Length O.A	85.00 M
Length P.P	77.70 M
Breadth	20.00 M
Max Draft	6.80 M
Gross Tonnage	4 366 T
Net Tonnage	1 813 T
Deadweight	5 549 T
Lightweight	3 072 T

CLASS NOTATIONS

DNV *1A1,Ice C, DYNPOS AUTR, Clean Design
 Comf V3/C3, E0, SF, dk(+), 10t/m2, LFL*,
 HL (2,8)Oil Recovery
 NAUT/OSV, ERN 99.99.99.96
 NOFO 2009



OUTLINE SPECIFICATION

MACHINERY AND PROPELLER PLANTS

Main Engines/Generators : 4 x 1825 kw CAT 3516B-DSG
Emergency Generator: 1 x 200 kw Volvo Penta D9A
Main Propulsion: 2 x 2300 kw SteerProp SP 35 CRP
FWD Azimuth: 1 x 880 kw Brunvoll CPP
FWD Tunnel Thrusters: 2 x 1000 kw Brunvoll CPP

Gyro: 3 x Simrad GC 80
Speed Repeater: Skipper IR 300
VDR: Furuno VR 3000
GPS: 2 x Furuno GP 150
Bridge Watch: VICO system NAUT/OSV
ECDIS: Tecdis T 2138
Speed log: Furuno DS 80

CARGO CAPACITIES NOFO 2009

Deck Cargo: 2 800 Tons
Deck Area: 1004 m²
59.8 x 16.8 meter free space
Deck Strength: 10 Tons/m²
Fuel Oil: 903 m³, in 11 tanks
Liquid Mud (SG 2.8): 703 m³, in 6 tanks
Agitators: Fitted in each mud tanks
Brine (SG 2.5): 418 m³, in 2 tanks
Base Oil: 203 m³, in 2 tanks
Pot Water: 1007 m³, in 11 tanks
Drill Water/Ballast: 2470 m³, in 24 tanks
Methanol: 145 m³, in 1 tank
Special Products: 146 m³, in 1 tank
Slop: 186 m³, in 2 tanks
ORO: 1803 m³, 8 x 100 m³/hour
Cement/Barite/Bentonit: 440 m³, in 6 tanks

Discharge

Fuel Transfer Capacity: 2 x 150 m³/hour, @ 9 bar
Flowmeter with Printer
Brine (SG 2.5): 2 x 150 m³/hour @ 24/11 bar
Base Oil: 2 x 100 m³/hour @ 9 bar
Pot Water: 1 x 150 m³/hour @ 9 bar
Drill water/Ballast: 2 x 150 m³/hour @ 9 bar
Methanol: 1 x 75 m³/hour @ 9 bar
Special Product: 1 x 75 m³/hour @ 9 bar
Slop: 2 x 100 m³/hour 24/11 bar
Cement/Barite/Bentonit: 2 x 30 m³/hour @ 6.5 bar
ORO: 8 x 100 m³/hour @ 9 bar

ENVIRONMENT AND CARGO CONTROL PLANTS

Incinerator: Saniterm SH 20 SM/SR
Steam Generator: Parat Halvorsen AS 1600 kw
Hot Liquid Cargo Tank: 1 x 146 m³
Tank Cleaning: Per Gjerdrum AS
Special Cargo Tanks: Stainless Steel Tanks for Methanol
Inert Gas System: N₂ Generator, Membrane Separation
Cargo Manifolds: Centre / Aft each side inside "Safe haven"

NAVIGATION

Bridge Consoles: Aft, Fwd and both Wings
Operation Control Office: Located on Bridge
Autopilot: Furuno AP 50
DP System: Kongsberg K Pos DP 2
Joystick System: Kongsberg C-Joy Constant
DP Motion System 1: Sea Tex MRU 2
DP Motion System 1: Sea Tex MRU 5
Fanbeam: Kongsberg Lazer Mk 4,2
DGPS: 2 x Furuno GP 150
Wind Sensor: 2 x Kongsberg Maritime
Radar 1: Furuno FAR 2137 S
Radar 2: Furuno FCR 2827 Chart Radar
Echo Sounder: Furuno FE 700

SPEED AND FUEL CONSUMPTION

Full speed: 15.0 knots 28.0 m³/24 hours
Service speed: 12.5 knots 17.0 m³/24 hours
Economic speed: 11.0 knots 12.0 m³/24 hours
DP operation: 5.6 m³/24 hours at position keeping
Harbor mode: 1.4 m³/24 hours

CARGO HANDLING EQUIPMENT

1 x TTS Marine GPK knuckle crane, SWL 3 tons/13 meter
1 x TTS Marine GPT telescopic jib, SWL 3 tons/13 meter
2 x Capstans aft, NDM SWL 8 tons
6 x Cargo Securing Winches, NDM SWL 3 tons
1 x Tugger Winch, NDM TU SWL 15 tons

LIFE SAVING EQUIPMENT

Ship Certificate: 23 persons
Life Rafts: 4 x 25 persons Unitor
MOB: 1 x NORSAFE
MOB Davit: 1 x HLT 3500 TTS
Survival Suits: 23 SOLAS Immersion Suits

COMMUNICATION

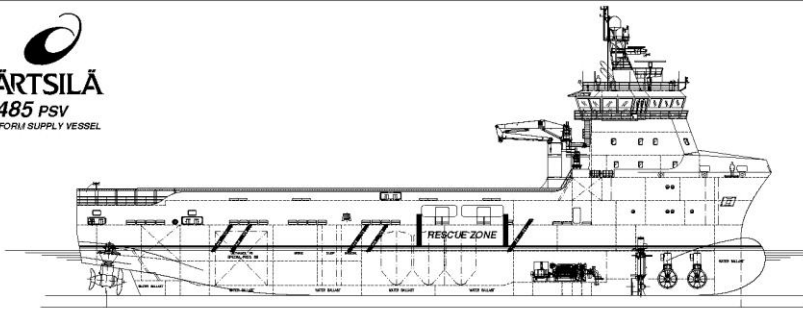
Navtex: Furuno NX-700 B
Radar Transponder: 2 x Jotron Tron SART
DSC Terminal: Furuno FS 2570 C
AIS: Furuno FA 150
EPIRB manual: Jotron 45 SX
EPIRB Free Float: Jotron Tron 40 S Mk II
Radio Station: SSB, MF, HF, Furuno FS 1570
VHF Portable: 3 x Jotron Tron TR 20 GMDSS
VHF Station: Furuno FM 8800 S
UHF Portable: 5 x Motorola GP 340
Inmarsat C: Furuno Felcom 15
Intercom: Zenitel ACM 144 66/VO
Sound System: Vingtor VSS 111
Emergency: Vingtor VSP 211 L
PA System: Zenitel VPA 120, 240 and 400

Satellit Communication: + 47 2154 9016 / 17 / 18 / 19
Mobile Phone: + 47 46 90 79 06
Vessel E-mail: captain.mistral@vestlandoffshore.no

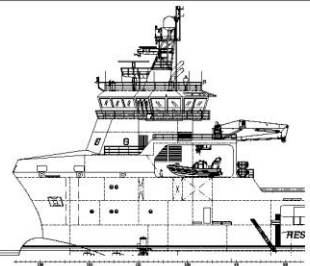
ACCOMMODATION

Outfitted for 23 persons in spacious and comfortable facilities
Single Cabins: 15 with bathrooms
Double Cabins: 4 with bathrooms
Hospital: 1 Highest standard
Office: 1 fully outfitted
Day Room: 2 comfortable outfitted
Gymnasium: 1 fully outfitted
Entertainment: In Day Rooms and all Cabins
Antiroll Tank: 1 x 440 m³ + 1 x 160 m³

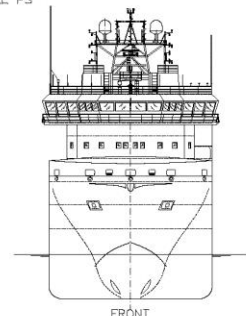
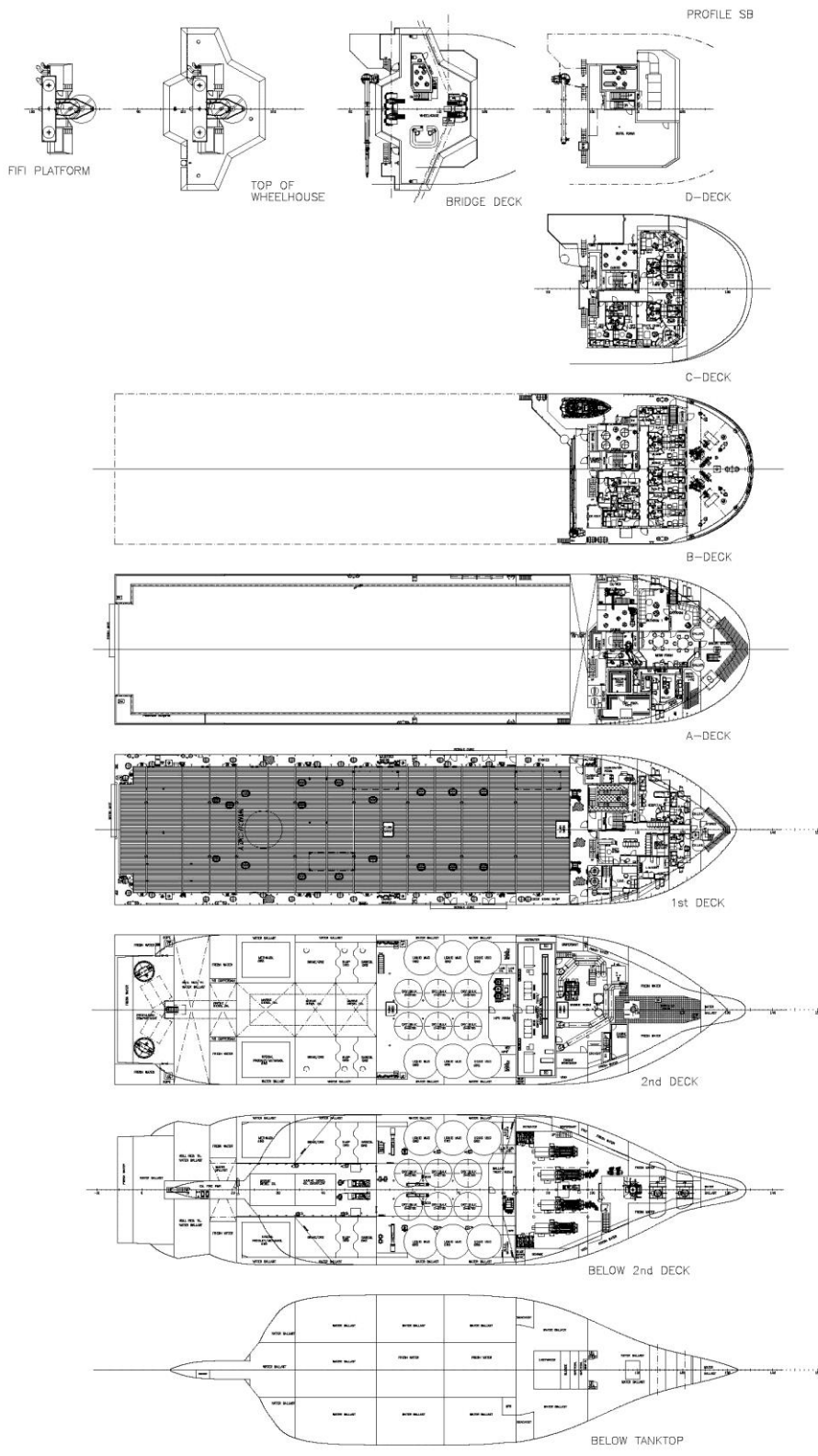




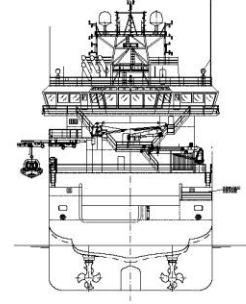
- TOP DECK STRUCTURE PLAN
- BRIDGE DECK STRUCTURE PLAN
- A-DECK STRUCTURE PLAN
- B-DECK STRUCTURE PLAN
- C-DECK STRUCTURE PLAN
- D-DECK STRUCTURE PLAN
- WHEELHOUSE STRUCTURE PLAN
- 2ND DECK STRUCTURE PLAN
- 1ST DECK STRUCTURE PLAN



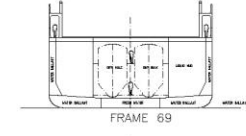
PROFILE PS



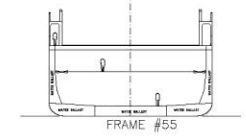
FRONT



AFT VIEW



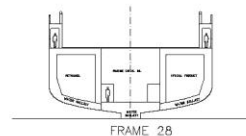
FRAME 69



FRAME #55



FRAME 38



FRAME 28

CABIN PLAN			
	Toilet	Shower	STATER
	Cabinets	Cabinets	CABINETS
C-DECK:	8cabinets	—	8 CABINETS
B-DECK:	7cabinets	8cabinets	10 CABINETS
A-DECK:	—	—	—
1st DECK:	—	4cabinets	2 CABINETS
TOTALS:	15cabinets	10cabinets	20 CABINETS

PRINCIPAL PARTICULARS:	
LENGTH OVER ALL:	85.00 m
LENGTH BETW. PERP.:	77.70 m
BREADTH:	20.00 m
DEPTH TO 1st DECK:	8.60 m
DEPTH TO 2nd DECK:	5.40 m
DECK AREA:	1000 m ²
FRAME SPACING:	600 mm

PLATFORM SUPPLY VESSEL VS485 PSV		
GENERAL ARRANGEMENT		
Scale: 1:800	Project No: 101	
Wärtsilä Ship Design	4253	
Wärtsilä AS	101-001	

