

## **MV “VESTLAND INSULA”**

<b>SHIP DESIGN</b>	<b>VS 485 MK III</b>
<b>CLASSIFICATION</b>	<b>DET NORSKE VERITAS</b>
<b>BUILDER</b>	<b>HELLESØY VERFT AS, HULL NO 150</b>
<b>PORT OF REGISTRY</b>	<b>BERGEN, NORWAY</b>
<b>FLAG</b>	<b>NOR</b>
<b>MMSI</b>	<b>TBA</b>
<b>IMO NUMBER</b>	<b>963 43 47</b>
<b>DELIVERY</b>	<b>JANUARY 2013</b>
<b>CALL SIGN</b>	<b>LCXZ</b>

<b>OWNER:</b>	<b>VESTLAND OFFSHORE AS</b>	<b>MANAGER:</b> BB Charter to Golden Energy
<b>REGISTERED OWNER:</b>	<b>VESTLAND PSV AS</b>	
	<b>N-5384 TORANGSVÅG</b>	

### **MAIN DIMENSIONS**

Length O.A	85,60 M
Length P.P	77.70 M
Breadth	20.00 M
Max Draft	7.14 M
Gross Tonnage	4552 T
Net Tonnage	1839 T
Deadweight	5 000 T
Lightweight	3250 T

### **CLASS NOTATIONS**

DNV \*1A1,Ice C, DYNPOS AUTR, Clean Design  
 Comf V3/C3, E0, SF, dk(+), 10t/m2, LFL\*,  
 HL (p)Oil Recovery, NAUT/OSV (A),  
 ERN 99.99.99.99  
 NOFO 2009

Option:  
 Stand-by Vessel (S) NMD Rescue, FiFi I, Deice C



# OUTLINE SPECIFICATION

## MACHINERY AND PROPELLER PLANTS

Main Engines/Generators:	4 x Wartsila 9L20 1665kw
Emergency Generator:	Volvo Penta 175 kW
Main Propulsion:	2 x fixed pitch propellers 2300 kW
FWD Azimuth:	1 x Brunvoll 880 kW
FWD Tunnel Thrusters:	2 x Brunvoll 1000 kW

## CARGO CAPACITIES NOFO 2009

Deck Cargo:	2 800 Tons
Deck Area:	1004 m <sup>2</sup>
	59.8 m x 16.8 m free space
Deck Strength:	10 Tons/m <sup>2</sup>
Fuel Oil:	897 m <sup>3</sup> ,
Liquid Mud (SG 2.8):	695 m <sup>3</sup> , Agitators in all tanks
Brine (SG 2.5):	418 m <sup>3</sup> ,
Base Oil:	203 m <sup>3</sup> ,
Pot Water:	1050 m <sup>3</sup> ,
Drill Water/Ballast:	2629 m <sup>3</sup> ,
Methanol:	146 m <sup>3</sup> ,
Special Product:	146 m <sup>3</sup> ,
Slop:	2 x 90 m <sup>3</sup>
ORO:	1808 m <sup>3</sup>
Cement/Barite/Bentonit:	330 m <sup>3</sup>

## ENVIRONMENT AND CARGO CONTROL PLANTS

Incinerator:	Uimatec Pyro
Cement plant:	Van Aalst
All pumps:	Ing. Per Gjerdrum
Electrical Boiler:	Parat Halvorsen AS
Equipment on deck:	Norwegian Deck Mach AS
Tank Cleaning:	Per Gjerdrum AS
Special Cargo Tanks:	Stainless Steel Tanks for Methanol
Inert Gas System:	Wilhelmsen N2 Generator
Cargo Manifolds:	Midship SB&PS and Aft

## NAVIGATION

Bridge Consoles:	Steinsvik Aft, Fwd and both Wings
Operation Control Office:	Located on Bridge
Autopilot:	Simrad AP 50
DP System:	Kongsberg K Pos DP 2
Joystick System:	Kongsberg C-Joy Constant
DP Motion System 1:	Sea Tex MRU 2
DP Motion System 1:	Sea Tex MRU 5
Fanbeam:	Kongsberg Lazer Mk 4,2
DGPS:	2 x Furuno GP 150
RADIUS:	1 x Radius 1000 Kongsberg
Wind Sensor:	2 x Kongsberg Maritime
Radar 1:	1 x 10 cm/ S band, IMO ARPA
Radar 2:	1 x 3 cm/ X band w/mini ARPA
Oil Radar:	According to NOFO Standard 2009.
Echo Sounder:	Furuno FE 700
Gyro:	3 x Simrad GC 80
Speed Repeater:	Skipper IR 300
VDR:	Furuno VR 3000
GPS:	2 x Furuno GP 150
Bridge Watch:	VICO system NAUT/OSV
ECDIS:	Furuno Tecdis T - 2137
Speed log:	Skipper EML 224

## SPEED AND FUEL CONSUMPTION

Full speed:	15,0 knots 20.2 mt/24hrs
Service speed:	12.5 knots 10,0 mt/24 hrs
Economic speed:	11.0 knots 7,3 mt/24 hrs
DP operation:	5,3 mt/24 hrs at position keeping 1,6m Hs
St-by at field:	2,9 mt/24 hrs at one engine
Harbor mode:	2.0 mt/24 hrs

## CARGO HANDLING EQUIPMENT

1 x Cargotec knuckle crane, SWL 3 tons/15 meter
2 x Norwegian Deck Mach AS, 10 t capstans aft
1 x Norwegian Deck Mach AS, 10t capstan
6 x Norwegian Deck Mach AS, cargo securing winches
1 x Norwegian Deck Mach AS, Tugger Winch

## LIFE SAVING EQUIPMENT

Ship Certificate:	22 persons
Life Rafts:	Capacity for 22 persons, each side
MOB:	Norsafe Rescue/MOB boat (28 ft) for min 10 persons
MOB Davit:	Cargotec SOLAS approved
Survival Suits:	3 x Full dry insulated Survival suits according to rules

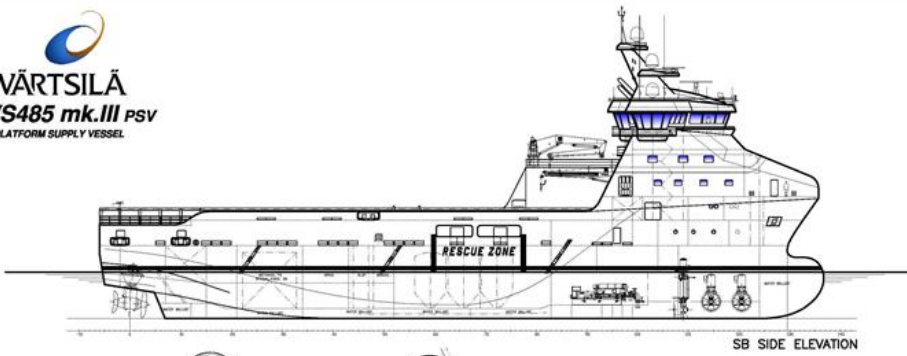
## COMMUNICATION

Navtex:	Furuno NX-700 B
Radar Transponder:	2 x Jotron Tron SART
DSC Terminal:	Furuno FS-2570 C
AIS:	Furuno FA 150
EPIRB manual:	Jotron 45 SX
EPIRB Free Float:	Jotron Tron 40 S Mk II
Radio Station:	SSB, MF, HF, Furuno FS-2570 C
VHF Portable:	3 x Jotron Tron TR 20 GMDSS
VHF Station:	Furuno FM-8800 S
UHF Portable:	5 x Motorola GP 340
Inmarsat C:	Furuno Felcom 15
Intercom:	Zenitel ACM 144 66/VO
Sound System:	Vingtor VSS 111
Emergency:	Vingtor VSP 211 L
PA System:	Zenitel VPA 120, 240 and 400
Satellit Communication:	SEVSAT 4003-4006
Mobile Phone:	TBA
Vessel E-mail:	<a href="mailto:captain.insula@vestlandoffshore.no">captain.insula@vestlandoffshore.no</a>

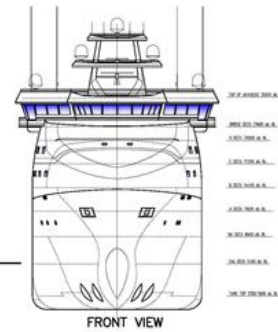
## ACCOMMODATION

Outfitted for 22 persons in spacious and comfortable facilities	
Single Cabins:	12 with bathrooms
Double Cabins:	5 with bathrooms
Hospital:	1 Highest standard
Office:	1 fully outfitted
Day Room:	2 comfortable outfitted
Gymnasium:	1 fully outfitted
Entertainment:	In Day Rooms and all Cabins
Antiroll Tank:	1 x Tank aft below 1st deck. 1 x Tank between A- and B-deck.

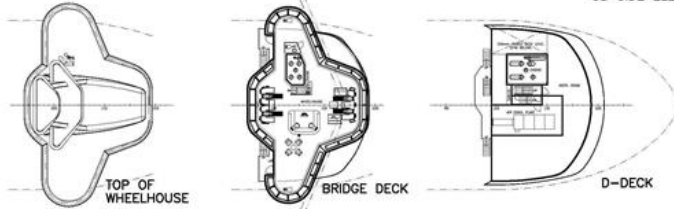




SB SIDE ELEVATION



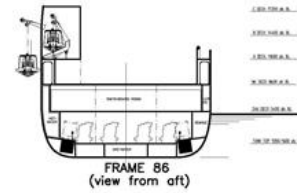
FRONT VIEW



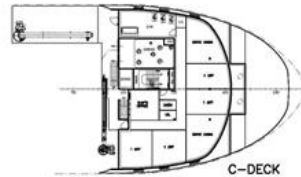
TOP OF WHEELHOUSE

BRIDGE DECK

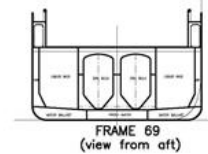
D-DECK



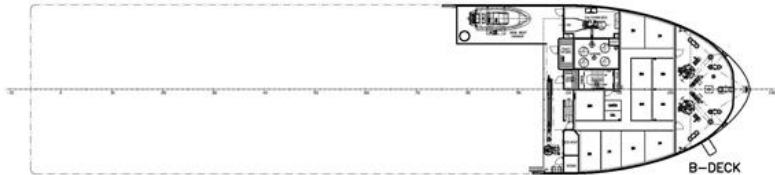
FRAME 86  
(view from aft)



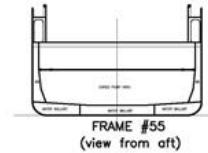
C-DECK



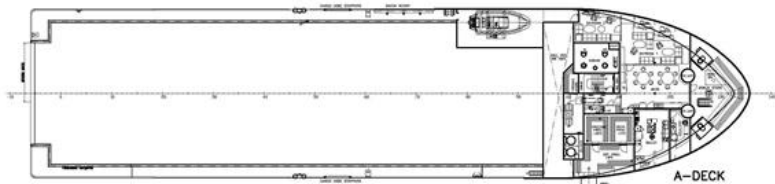
FRAME 69  
(view from aft)



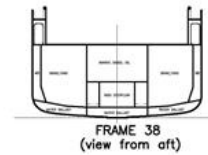
B-DECK



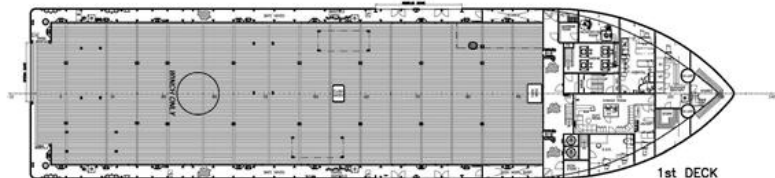
FRAME #55  
(view from aft)



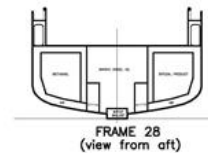
A-DECK



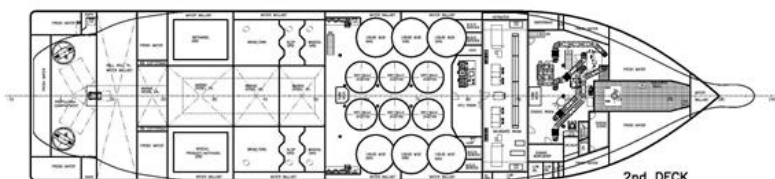
FRAME 38  
(view from aft)



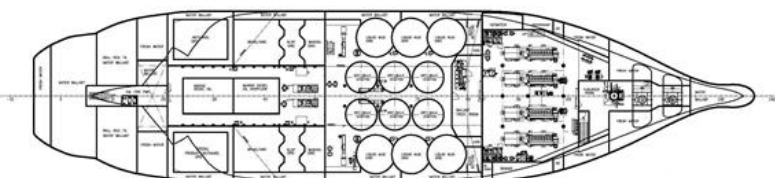
1st DECK



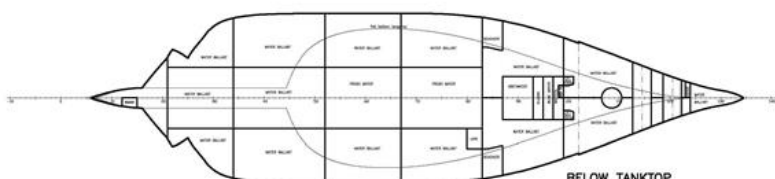
FRAME 28  
(view from aft)



2nd DECK



BELOW 2nd DECK



BELOW TANKTOP

CABIN PLAN

	No. Cabin	No. Cabin	No. Cabin
C-DECK	8pcrs	8pcrs	8pcrs
B-DECK	8pcrs	10pcrs	11pcrs
TOTALS	12pcrs	10pcrs	23pcrs

PRINCIPAL PARTICULARS:

LENGTH O.A. (INCL. BULLB):	85.60 m
LENGTH BETW. PERP.:	77.70 m
BREADTH:	20.00 m
DEPTH TO 1st DECK:	8.50 m
DEPTH TO 2nd DECK:	5.40 m
DECK AREA:	1000 m <sup>2</sup>
FRAME SPACING:	600 mm

PLATFORM SUPPLY VESSEL			
VS485 PSV mk.III			
GENERAL ARRANGEMENT	1:800	MARK NO.	101
WÄRTSILÄ	WÄRTSILÄ Ship Design	4436	101-001
1/1		1/1	

