

MV "VESTLAND CETUS"

SHIP DESIGN	VS 485 MK III
CLASSIFICATION	DET NORSKE VERITAS
BUILDER	FJELLSTAD AS, 1684
PORT OF REGISTRY	NASSAU
FLAG	BAHAMAS
MMSI	311 000 082
IMO NUMBER	964 43 42
DELIVERY	FEBRUARY 2013
CALL SIGN	C6AL7

OWNER:	VESTLAND OFFSHORE AS	MANAGER: VESTLAND MANAMENT AS
REGISTERED OWNER:	VESTLAND PSV AS N-5384 TORANGSVÅG	N-5384 TORANGSVÅG

MAIN DIMENSIONS

Length O.A	85,60 M
Length P.P	77.70 M
Breadth	20.00 M
Max Draft	7.14 M
Gross Tonnage	4552 T
Net Tonnage	1839 T
Deadweight	5000 T
Lightweight	3250 T

CLASS NOTATIONS

DNV *1A1,Ice C, DYNPOS AUTR, Clean Design
Comf V3/C3, E0, SF, dk(+), 10t/m2, LFL*,
HL (p)Oil Recovery, NAUT/OSV (A),
ERN 99.99.99.99
NOFO 2009

Option:
Stand-by Vessel (S) NMD Rescue, FiFi I, Deice C



OUTLINE SPECIFICATION

MACHINERY AND PROPELLER PLANTS

Main Engines/Generators:	4 x Wartsila 9L20 1665kw
Emergency Generator:	Volvo Penta 175 kW
Main Propulsion:	2 x fixed pitch propellers 2300 kW
FWD Azimuth:	1 x Brunvoll 880 kW
FWD Tunnel Thrusters:	2 x Brunvoll 1000 kW

CARGO CAPACITIES NOFO 2009

Deck Cargo:	2 800 Tons
Deck Area:	1 004 m ²
	59.8 m x 16.8 m free space
Deck Strength:	10 Tons/ m ²
Fuel Oil:	897 m ³
Liquid Mud (SG 2.8):	695 m ³ , Agitators in all tanks
Brine (SG 2.5):	418 m ³
Base Oil:	203 m ³
Pot Water:	1 050 m ³
Drill Water/Ballast:	2 629 m ³
Methanol:	146 m ³
Special Product:	146 m ³
Slop:	2 x 90 m ³
ORO:	1 808 m ³
Cement/Barite/Bentonit:	330 m ³

ENVIRONMENT AND CARGO CONTROL PLANTS

Incinerator:	Ulmatec Pyro
Cement plant:	Van Aalst
All pumps:	Ing. Per Gjerdrum
Electrical Boiler:	Parat Halvorsen AS
Equipment on deck:	Norwegian Deck Mach AS
Tank Cleaning:	Per Gjerdrum AS
Special Cargo Tanks:	Stainless Steel Tanks for Methanol
Inert Gas System:	Wilhelmsen N2 Generator
Cargo Manifolds:	Midship SB&PS and Aft

NAVIGATION

Bridge Consoles:	Steinsvik Aft, Fwd and both Wings
Operation Control Office:	Located on Bridge
Autopilot:	Simrad AP 50
DP System:	Kongsberg K Pos DP 2
Joystick System:	Kongsberg C-Joy Constant
DP Motion System 1:	Sea Tex MRU 2
DP Motion System 1:	Sea Tex MRU 5
Fanbeam:	Kongsberg Lazer Mk 4,2
DGPS:	2 x Furuno GP 150
RADIUS:	1 x Radius 1000 Kongsberg
Wind Sensor:	2 x Kongsberg Maritime
Radar 1:	1 x 10 cm/ S band, IMO ARPA
Radar 2:	1 x 3 cm/ X band w/mini ARPA
Oil Radar:	According to NOFO Standard 2009.
Echo Sounder:	Furuno FE 700
Gyro:	3 x Simrad GC 80
Speed Repeater:	Skipper IR 300
VDR:	Furuno VR 3000
GPS:	2 x Furuno GP 150
Bridge Watch:	VICO system NAUT/OSV
ECDIS:	Furuno Tecdis T - 2137
Speed log:	Skipper EML 224

SPEED AND FUEL CONSUMPTION

Full speed:	15,0 knots 19.8 mt/24hrs
Service speed:	12.5 knots 10,0 mt/24 hrs
Economic speed:	11.0 knots 7,3 10,2 mt/24 hrs
DP operation:	5.3 mt/24 hrs at position keeping 1,6m Hs
St-by at field:	2.9 mt/24 hrs at one engine
Harbor mode:	2.0 mt/24 hrs

CARGO HANDLING EQUIPMENT

1 x Cargotec knuckle crane, SWL 3 tons/15 meter
2 x Norwegian Deck Mach AS, 10 t capstans aft
1 x Norwegian Deck Mach AS, 10t capstan
6 x Norwegian Deck Mach AS, cargo securing winches
1 x Norwegian Deck Mach AS, Tugger Winch

LIFE SAVING EQUIPMENT

Ship Certificate:	22 persons
Life Rafts:	Capacity for 22 persons, each side
MOB:	Norsafe Rescue/MOB boat (28 ft) for min 10 persons
MOB Davit:	Cargotec SOLAS approved
Survival Suits:	3 x Full dry insulated Survival suits according to rules

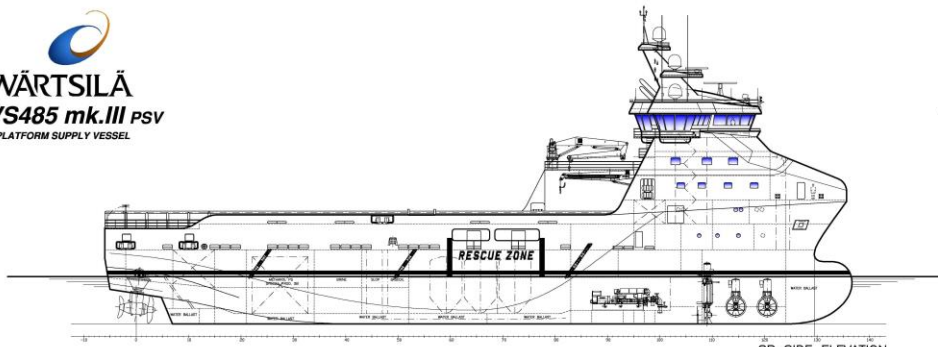
COMMUNICATION

Navtex:	Furuno NX-700 B
Radar Transponder:	2 x Jotron Tron SART
DSC Terminal:	Furuno FS-2570 C
AIS:	Furuno FA 150
EPIRB manual:	Jotron 45 SX
EPIRB Free Float:	Jotron Tron 40 S Mk II
Radio Station:	SSB, MF, HF, Furuno FS-2570 C
VHF Portable:	3 x Jotron Tron TR 20 GMDSS
VHF Station:	Furuno FM-8800 S
UHF Portable:	5 x Motorola GP 340
Inmarsat C:	Furuno Felcom 15
Intercom:	Zenitel ACM 144 66/VO
Sound System:	Vingtor VSS 111
Emergency:	Vingtor VSP 211 L
PA System:	Zenitel VPA 120, 240 and 400
Satellit Communication:	SEVSAT 4003-4006
Mobile Phone:	+4721038164
Vessel E-mail:	captain.cetus@vestlandoffshore.no

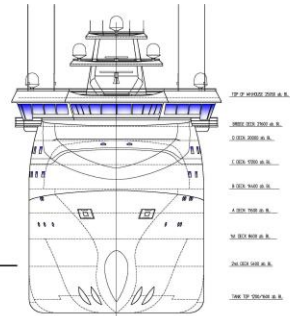
ACCOMMODATION

Outfitted for 22 persons in spacious and comfortable facilities	
Single Cabins:	12 with bathrooms
Double Cabins:	5 with bathrooms
Hospital:	1 Highest standard
Office:	1 fully outfitted
Day Room:	2 comfortable outfitted
Gymnasium:	1 fully outfitted
Entertainment:	In Day Rooms and all Cabins
Antiroll Tank:	1 x Tank aft below 1st deck. 1 x Tank between A- and B-deck.

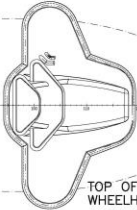




SB SIDE ELEVATION



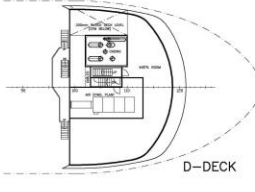
FRONT VIEW



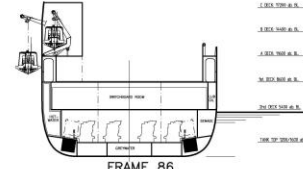
TOP OF WHEELHOUSE



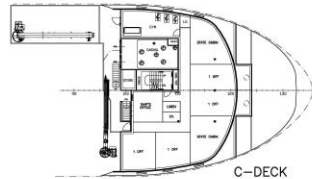
BRIDGE DECK



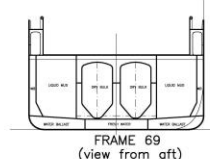
D-DECK



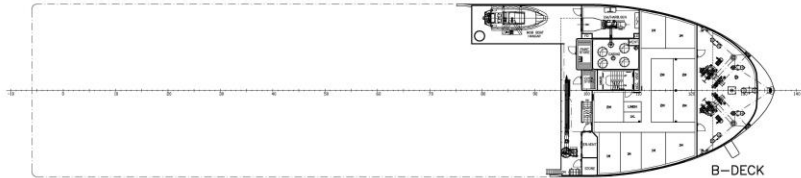
FRAME #66
(view from aft)



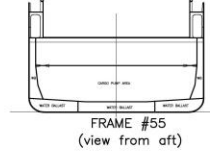
C-DECK



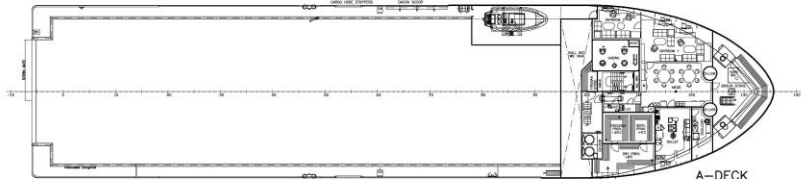
FRAME #69
(view from aft)



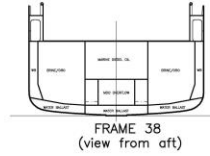
B-DECK



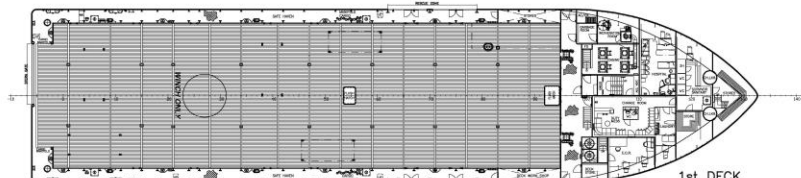
FRAME #55
(view from aft)



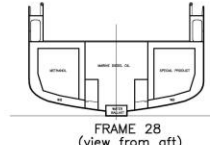
A-DECK



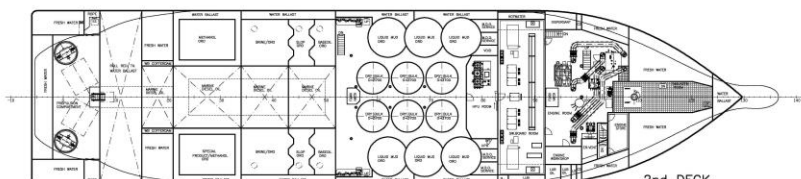
FRAME #38
(view from aft)



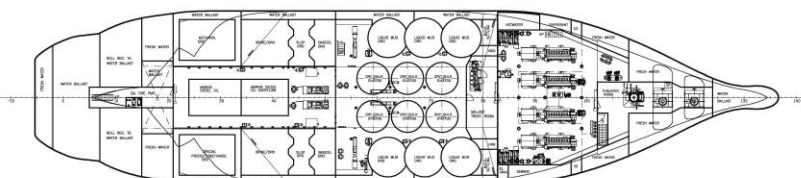
1st DECK



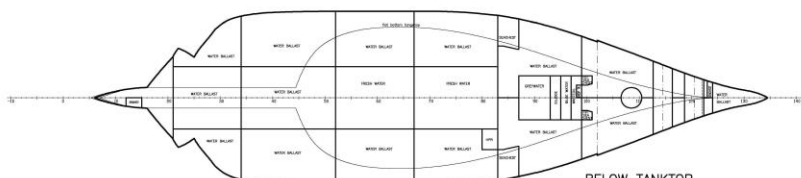
FRAME #28
(view from aft)



2nd DECK



BELOW 2nd DECK



BELOW TANKTOP

CABIN PLAN

	1st Deck	2nd Deck	TOTAL
C-DECK	10cabins	8cabins	18cabins
B-DECK	10cabins	13cabins	23cabins
TOTALS	20cabins	21cabins	41cabins

PRINCIPAL PARTICULARS:

LENGTH O.A. (INCL. BUIL):	85.60 m
LENGTH BETW. PERP.:	77.70 m
BREADTH:	20.00 m
DEPTH TO 1st DECK:	8.60 m
DEPTH TO 2nd DECK:	5.40 m
DECK AREA:	1000 m ²
FRAME SPACING:	600 mm

PLATFORM SUPPLY VESSEL VS485 PSV mk.III			
GENERAL ARRANGEMENT	SCALE: 1:200	DATE: 2011-03-01	NO: 101
WÄRTSILÄ	Wärtsilä Ship Design	4436	101-001
4436-101-001.dwg	1/1		