

Seismic Support Vessel

SHIP DESIGN	SALT – Project 0046
SHIP NAME	Ocean Mermaid
CLASSIFICATION	Bureau Veritas
BUILDER	Cemre Marien Endustri Anonim Sirketi
PORT OF REGISTRY	Nassau
FLAG	Bahamas
MMSI	311 000 275
IMO NUMBER	9742443
CALL SIGN	C6B18 (Charlie Six Bravo Indigo Eight)



OWNER: VESTLAND OFFSHORE TBA
N-5384 TORANGSVÅG

MANAGER: VESTLAND MANAMENT AS
N-5384 TORANGSVÅG

MAIN DIMENSIONS

Length O.A	70,0 M
Length P.P	61,5 M
Breadth	17,0 M

CLASS NOTATIONS

I*Hull*Mach, SDS, *AUT-UMS, BWT, COMF C(3), COMF-NOISE 3/COMF-VIB 3, CLEANSHIP SUPER, SYS-NEQ-OSV, Ice Class 1B, Heavy Cargo (3t/m2), MON-SHAFT, SPS 60, Unrestricted Navigation, Special Service/Seismic Support Vessel, *AVM-DPS



OUTLINE SPECIFICATION

MACHINERY AND PROPELLER PLANTS

Main Gen-sets:	4 x Yanmar 1000kw at 750 RPM
Emergency Generator:	1 x Scania 200 kW
Main Propulsion:	2 x Berg CPP in nozzles 2 x 1500 kW
FWD Azimuth Thruster:	1 x ZF 600 kW
Auxiliary boiler:	1 x Pyro 870 kW
Exhaust gas boiler	2 x Pyro for Heat Recovery from Engines
Heat Recovery System	1 x Pyro Complete Arrangement

DECK AND TANK CAPACITIES

All figures are approx.

Deck load capacity:	1000 Tons VCG 1m above deck
Deck Area approx.:	500 m ²
Tank volume for MDO:	500 m ³
Tank volume for HFO:	2000 m ³
Heating capacity HFO:	60 °C
Fresh water:	100 m ³
Slop:	25 m ³
Grey water:	65 m ³
Bilge water holding tank:	25 m ³
Bilge water settling tank:	25 m ³
Sludge:	9 m ³
Waste oil:	9 m ³
FO drain:	9 m ³

GARBAGE DISPOSAL PLAMTS

- 1 x Teamtec Incinerator 200 000 kcal/h
- 1 x Bramidan Compactor, Marine B3 Denmark

NAVIGATION

- 1 x Bridge Watch
- 1 x Furuno DS-80 Doppler Speed log with interface to conning
- 2 x Furuno GPA 150 Dual DGPS
- 1 x Furuno FE-700 Echo Sounder interfaced to DGPS and conning
- 1 x Anschuts Nautopilot 5500 with off-course recorder and alarm
- 2 x Anschuts Double 22 Gyro Compasses
- 1 x Magnetic Compass Cassens & Plath
- 2 x Anschuts Gyro Repeaters, forward and aft consoles on bridge
- 1 x Anschuts Gyro Repeater in steering gear room
- 1 x Anschuts Gyro Repeater on chart table
- 1 x Furuno X-Band IMO Chart Radar FCR-2829
- 1 x Furuno S-Band IMO Radar FAR-2837 S
- 1 x Furuno Radar slave display
- 1 x TECDIS T 2138-AC Telko Dual ECDIS
- 1 x TECDIS 2138-A Telko Dual ECDIS
- 1 x SSAS
- 1 x Furuno VR-3000 VDR
- 2 x Alphantron Anemometers and Wind Sensors
- 1 x Kongsberg C-Joy
- 1 x Fuel Consumption "Econometer"
- Closed Circuit TV system (CCTV)
 - 3 x monitors 17"
 - 1 x CCTV recorder
 - 13 x fixed cameras

LIFE SAVING EQUIPMENT

- Ship Certificate: 60 persons
- Life Rafts: 7 x 20 men RFD (3 on each side and one spare)
- MOB: 1 x MARE SAFETY FRB 700 for min 10 pers
- MOB Davit: 1 x Vestdavit PL 4000 with shock absorber
- Additionally Davit: 1 x Vestdavit PLR 12005 with shock absorber
- Survival Suits: Survival suits according to rules for 60 persons

SPEED

Calm weather and sea conditions, draft 4,5 meters, auxiliary/hotel 200 KW
All figures shall be confirmed upon sea trial tests

Design theoretical speed:	13,5 knots
Bollard Pull:	55 tons
Fuel consumption 5 knots:	2,1 t/d
Fuel consumption 10 knots:	5,5 t/d
Fuel consumption 12 knots:	8,1 t/d
Fuel consumption 13 knots:	10,9 t/d

CARGO HANDLING EQUIPMENT

2 x Remote operated (deck and bridge) Bunkering Reels, NDM Norway
2 x 250m fuel-hoses 5"dia with "TODO" connections and "Weak Link"

- 1 x Remote operated (deck and bridge) dual-drum Reel, NDM Norway
- 1 x Bunkering operation towing line 170 m
- 1 x Emergency operation towing line 250 m
- 1 x Certified Fuel Oil Cargo Flow-meter connected to AIS

- 1 x Remote operated (deck and bridge) Streamer Reel with Spooler
Capacity 8000 meters of 59 mm streamer, NDM Norway

- 1 x ABAS Offshore Crane 12 t @ 10 m outreach, 10 t @ 17 m outreach

- 2 x Rpm controlled HFO Cargo pumps with capacity 200m²/ 45m

- 1 x Remote operated (deck and bridge) Towing hook. SWL 55 t
Tension and Monitoring Control on bridge

Provision cargo rooms at 1st deck:

- 1 x Freezing room -22°C
- 1 x Refrigeration room for temperature + 4°C
- 1 x Day provisions room +15°C

COMMUNICATION

- 1 x Furuno NX-700A Navtex
- 1 x Furuno TRON SART 20 Radar Transponder
- 1 x Furuno FA-150 AIS
- 1 x LRIT
- 1 x TRON 60S EPIRB manual
- 1 x TRON 40S EPIRB Free Float
- 1 x Furuno RC-1800 T Radio Station, GMDSS A3
- 2 x Furuno FM-8900S VHF on bridge
- 1 x Furuno FM-4721 VHF in ECR
- 3 x Jotron TRON TR-20 GMDSS VHF Portable
- 8 x Entel HT-833 UHF Portable with helmet equipment
- 2 x Entel HT-844 VHF Portable
- 4 x smoke diver helmet equipment
- 3 x Search lights on top of wheelhouse

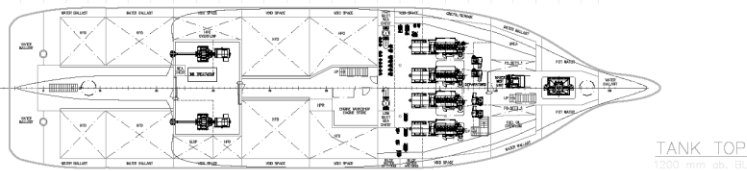
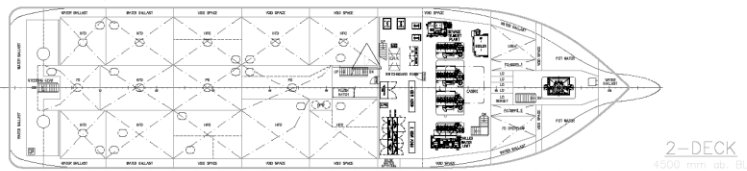
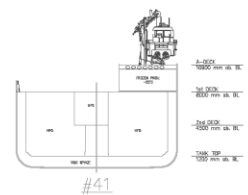
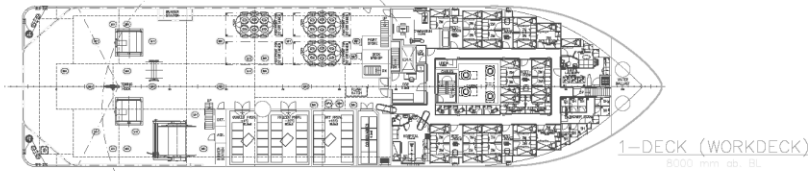
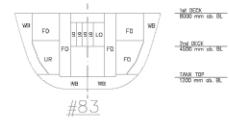
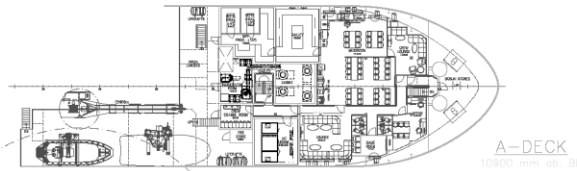
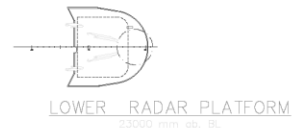
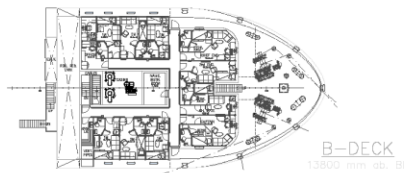
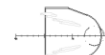
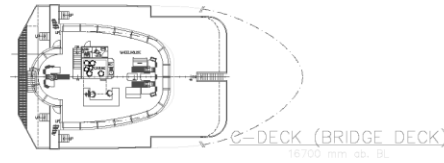
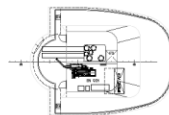
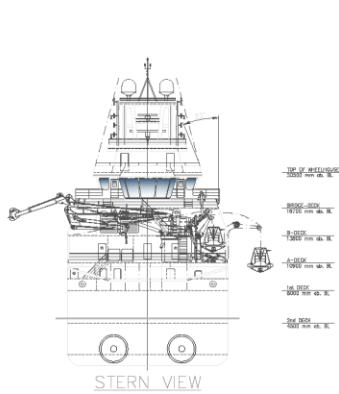
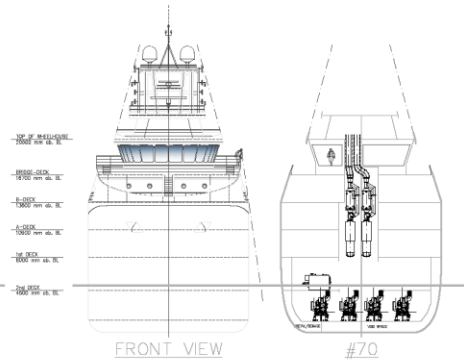
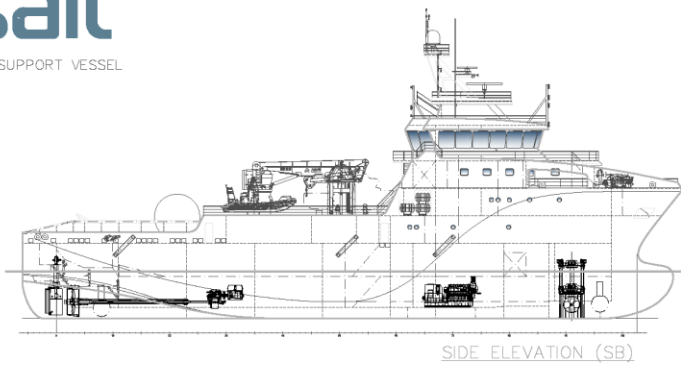
Intercom also covering cargo and deck areas
PA System

Satellite Communication:	Felcom-500
Mobile Phone:	TBA
Vessel E-mail:	TBA@vestlandoffshore.no

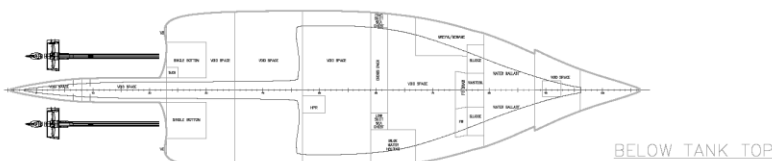
ACCOMMODATION

Outfitted for 60 persons in spacious and comfortable facilities

- Client Cabins: 2 x single
- Crew Cabins: 6 x single and 3 x two men
- Rest Cabins: for 46 persons
- Hospital: 1 x Highest offshore standard
- Office: 1 x fully outfitted
- TV Lounge: 1 x Comfortable outfitted for 12 persons
- Mess Room: 1 x outfitted for 40 persons
- Gymnasium: 1 x fully outfitted
- Entertainment: In Day Rooms and all cabins on deck B
- Antiroll Tank: Aft below bridge



PRINCIPAL PARTICULARS	
LENGTH OVER ALL:	99.80m
LENGTH BETWEEN PP:	81.50m
BREADTH MLD.:	17.00m
DEPTH MLD.:	8.00m



NO.	DESCRIPTION	DATE	BY	CHKD.	APP.
0046	101-001				
SALT 400 SEISMIC SUPPORT VESSEL					
GENERAL ARRANGEMENT					
<small>The drawing is the property of Salt Design AS and shall not be reproduced, stored in a retrieval system, or transmitted in any form or by any means, electronic, mechanical, photocopying, recording, or by any information storage and retrieval system, without the prior written permission of Salt Design AS.</small>					