

## Seismic Support Vessel

<b>SHIP DESIGN</b>	<b>SALT – Project 035</b>
<b>SHIP NAME</b>	<b>Ocean Fortune</b>
<b>CLASSIFICATION</b>	<b>Bureau Veritas</b>
<b>BUILDER</b>	<b>Cemre Marien Endustri Anonim Sirketi</b>
<b>PORT OF REGISTRY</b>	<b>Nassau</b>
<b>FLAG</b>	<b>Bahamas</b>
<b>MMSI</b>	<b>311 000 276</b>
<b>IMO NUMBER</b>	<b>9742431</b>
<b>CALL SIGN</b>	<b>C6BI9 (Charlie Six Bravo India Nine)</b>



**OWNER:** Sun Atlantic LTD

**MANAGER:** VESTLAND MANAGEMENT AS  
N-5384 TORANGSVÅG

### MAIN DIMENSIONS

Length O.A	69,80 M
Length P.P	61,50 M
Breadth	17,00 M

### CLASS NOTATIONS

I\*HULL\*MACH, SDS, \*AUT-UMS, \*CLEANSHIP BWT,  
\*AVM-DPS, \*SYS-NEQ OSV  
COMF-NOISE 3/COMF-VIB 3,  
ICE CLASS 1B, Heavy Cargo 30,  
MON-SHAFT, SPS 60, SDS, GREEN PASSPORT,  
Unrestricted Navigation,  
Special Service/Seismic Support Vessel



# OUTLINE SPECIFICATION

## MACHINERY AND PROPELLER PLANTS

Main Gen-sets:	4 x Yanmar 1000kw at 750 RPM
Emergency Generator:	1 x Scania 200 kW
Main Propulsion:	2 x Berg CPP in nozzles 2 x 1500 kW
FWD Azimuth Thruster:	1 x ZF 600 kW
Auxiliary boiler:	1 x Pyro 870 kW
Exhaust gas boiler	2 x Pyro for Heat Recovery from Engines
Heat Recovery System	1 x Pyro Complete Arrangement

## DECK AND TANK CAPACITIES

All figures are approx.

Deck load capacity:	1000 Tons VCG 1m above deck
Deck Area approx.:	500 m <sup>2</sup>
Tank volume for MDO:	500 m <sup>3</sup>
Tank volume for HFO:	2000 m <sup>3</sup>
Heating capacity HFO:	60 °C
Fresh water:	157.9m <sup>3</sup>
Slop:	25 m <sup>3</sup>
Grey water:	42.2 m <sup>3</sup>
Bilge water holding tank:	26 m <sup>3</sup>
Bilge water settling tank:	16 m <sup>3</sup>
Sludge:	12 m <sup>3</sup>
Waste oil:	8 m <sup>3</sup>
FO drain:	5 m <sup>3</sup>

## GARBAGE DISPOSAL PLANTS

- 1 x Teamtec Incinerator 189 200 kcal/h (220kw)
- 1 x Bramidan Compactor, Marine B3 Denmark
- 1 x Food Waste Disposer IMC - 523

## NAVIGATION

- 1 x Bridge Watch
- 1 x Furuno DS-80 Doppler Speed log with interface to conning
- 1 x Nortek Acoustic Doppler Current Profiler
- 2 x Furuno GPA 150 Dual DGPS
- 1 x Furuno FE-700 Echo Sounder interfaced to DGPS and conning
- 1 x Ratheon Anschuts Nautopilot 5300 with off-course recorder and alarm
- 2 x Ratheon Anschuts STD 22 Gyro Compasses
- 1 x Magnetic Compass Cassens & Plath ,REFLECTA/1
- 2 x Ratheon Anschuts Gyro Repeaters, forward and aft consoles
- 1 x Ratheon Anschuts Gyro Repeater in steering gear room
- 1 x Ratheon Anschuts Gyro Repeater on chart table
- 1 x Furuno X-Band IMO Chart Radar FCR-2829
- 1 x Furuno S-Band IMO Radar FAR-2837 S
- 1 x Furuno Radar slave display
- 3 x TECDIS 2138-A Telko Dual ECDIS
- 1 x SSAS
- 1 x Furuno VR-3000 VDR
- 2 x Alphantron Anemometers and Wind Sensors
- 1 x Kongsberg C-Joy ( + 1 remote control for port and stbd wings)
- 1 x Fuel Consumption "Econometer"
- 1 x Closed Circuit TV system (CCTV)
- 3 x monitors 17"
- 1 x CCTV recorder
- 13 x fixed cameras

## LIFE SAVING EQUIPMENT

Ship Certificate:	60 persons
Life Rafts:	7 x 20 men RFD (3 on each side and one spare)
MOB:	1 x MARE SAFETY FRB 700 for max 15 pers
MOB Davit:	1 x Vestdavit PLH 4000 with shock absorber
Additionally Davit:	1 x Vestdavit PLR 12005 with shock absorber
Survival Suits:	Survival suits according to SOLAS for 60 persons

## SPEED

Calm weather and sea conditions, draft 4,5 meters, auxiliary/hotel 200 KW  
All figures shall be confirmed upon sea trial tests

Design theoretical speed:	13,4 knots
Bollard Pull (ex Azimuth)	51 tons
Fuel consumption 5 knots:	2,8 t/d
Fuel consumption 10 knots:	6,5 t/d
Fuel consumption 12 knots:	8,7 t/d
Fuel consumption 13 knots:	10,9 t/d

## CARGO HANDLING EQUIPMENT

- 2 x Remote operated (deck and bridge) Bunkering Reels, NDM Norway
- 2 x 244m fuel-hoses 5"dia with "TODO" connections and "Weak Link"
- 1 x Remote operated (deck and bridge) dual-drum Reel, NDM Norway
- 1 x Bunkering operation towing line 170 m
- 1 x Emergency operation towing line 250 m
- 2 x Certified Fuel Oil Cargo Flow-meter connected to AIS
- 1 x Remote operated (deck and bridge) Streamer Reel with Spooler  
Capacity 8000 meters of 59 mm streamer, NDM Norway
- 1 x ABAS Offshore Crane 12 t @ 10 m outreach, 8 t @ 17 m outreach
- 2 x Rpm controlled HFO Cargo pumps with capacity 200m<sup>3</sup>/ 45m

- 1 x Remote operated (deck and bridge) Towing hook. SWL 70 t  
with Tension and Monitoring Control on bridge
- 1 x Pomek Dip Winch model DW-500

Provision cargo rooms at 1st deck:

- 1 x Freezing room -22°C
- 1 x Refrigeration room for temperature + 4°C
- 1 x Dry provisions room +15°C

## COMMUNICATION

- 1 x Furuno NX-700A Navtex
- 2 x Furuno TRON SART 20 Radar Transponder
- 1 x Furuno FA-150 AIS
- 1 x LRIT
- 2 x TRON 60S EPIRB manual
- 1 x Furuno RC-1800 T Radio Station, GMDSS A3
- 1 x Furuno FS-2575C MF/HF
- 2 x Furuno FM-8900S VHF on bridge
- 1 x Furuno FM-4721 VHF in ECR
- 3 x Jotron TRON TR-20 GMDSS VHF Portable
- 8 x Entel HT-833 UHF Portable with helmet equipment
- 2 x Entel HT-844 VHF Portable
- 4 x smoke diver helmet equipment
- 3 x Search lights on top of wheelhouse

Intercom also covering cargo and deck areas

PA System

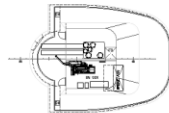
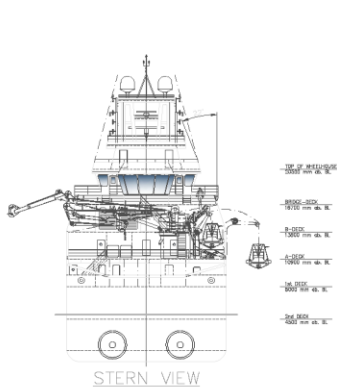
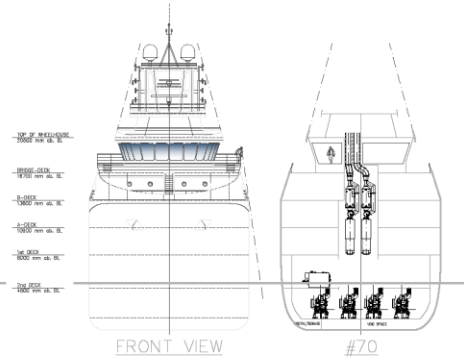
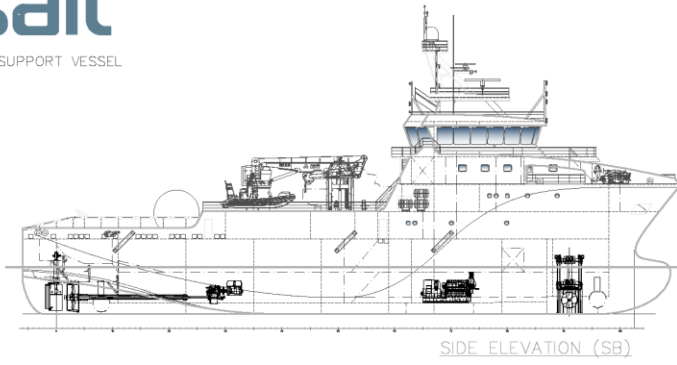
Satellite Communication: Sailor , Felcom-500

Bridge	+47 23 96 11 77
Office	+47 23 96 11 78
Mobile phone	+47 90 17 53 96
E-mail	<a href="mailto:captain.dolphin@vestlandoffshore.no">captain.dolphin@vestlandoffshore.no</a>

## ACCOMMODATION

Outfitted for 60 persons in spacious and comfortable facilities

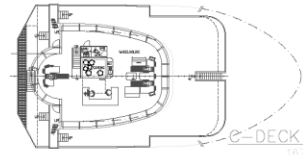
Client Cabins:	1 x two men
Crew Cabins:	8 x single and 2 x two men
Rest Cabins:	for 46 persons
Hospital:	1 x Highest offshore standard
Office:	1 x fully outfitted
TV Lounge:	1 x Comfortable outfitted for 12 persons
Mess Room:	1 x outfitted for 40 persons
Gymnasium:	1 x fully outfitted
Entertainment:	In Common Areas and all cabins on deck B
Antiroll Tank:	Yes, aft below bridge



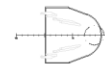
TOP OF WHEELHOUSE  
20500 mm ab. BL.



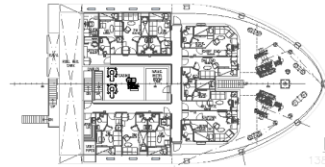
UPPER RADAR PLATFORM  
27400 mm ab. BL.



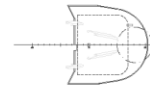
16700 mm ab. BL.



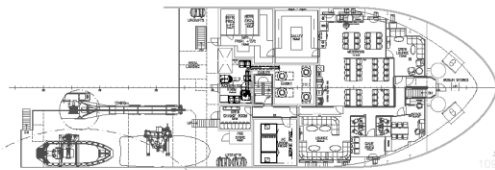
25300 mm ab. BL.



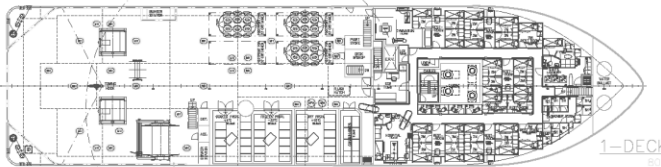
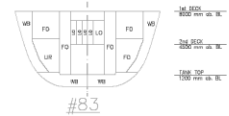
13800 mm ab. BL.



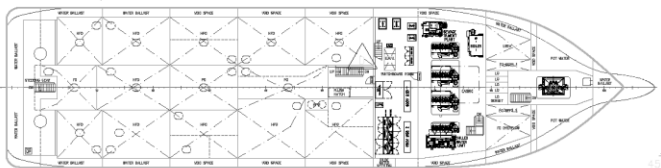
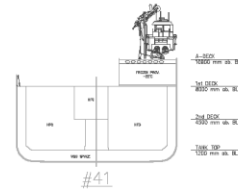
23000 mm ab. BL.



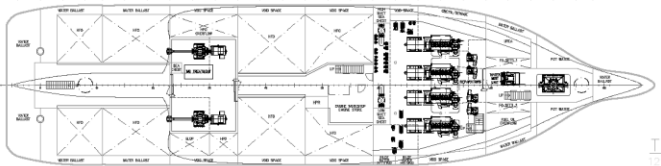
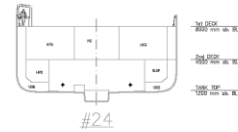
10900 mm ab. BL.



8000 mm ab. BL.



4500 mm ab. BL.



1200 mm ab. BL.

PRINCIPAL PARTICULARS	
LENGTH OVER ALL:	69.80m
LENGTH BETWEEN PP:	61.50m
BREADTH MLD.:	17.00m
DEPTH MLD.:	8.00m



NO.	LOCKSTEP	DATE	REV.	NO.	REV.	NO.	REV.	NO.	REV.
			0046		101-001				
PROJECT		SALT 450 SEISMIC SUPPORT VESSEL							
DRAWING #		GENERAL ARRANGEMENT							
DESIGNED BY		[Signature]							
CHECKED BY		[Signature]							
DATE		13.08.13							
SCALE		1:1							