

## **MV "VESTLAND MIRA"**

<b>SHIP DESIGN</b>	HAVYARD 832 L
<b>CLASSIFICATION</b>	DET NORSKE VERITAS
<b>BUILDER</b>	HAVYARD SHIP TECHNOLOGY AS, HULL NO 110
<b>PORT OF REGISTRY</b>	NASSAU
<b>FLAG</b>	BAHAMAS
<b>MMSI</b>	311 000 091
<b>IMO NUMBER</b>	9653989
<b>DELIVERY</b>	18 <sup>th</sup> of OCTOBER 2012
<b>CALL SIGN</b>	C6AM8

<b>OWNER:</b>	VESTLAND OFFSHORE AS	<b>MANAGER:</b>	VESTLAND MANAGEMENT AS
<b>REGISTERD OWNER:</b>	VESTLAND PSV AS		N-5384 TORANGSVÅG
	N-5384 TORANGSVÅG		

### **MAIN DIMENSIONS**

Length O.A	86,00 M
Length P.P	74.40 M
Breadth	17,60 M
Max Draft	6,40 M
Depth	7.70 M
Gross Tonnage	3246 T
Net Tonnage	1362 T
Deadweight	4 200 T
Lightweight	2613 T

### **CLASS NOTATIONS**

DNV \*1A1,Ice C, DYNPOS AUTR, Clean Design  
 Comf V3/C3, E0, SF, dk(+), LFL\*,  
 HL (2,8), Oil Recovery, NAUT/OSV (A),  
 Rescue NMD 200  
 ERN 99.99.99.99



# OUTLINE SPECIFICATION

## MACHINERY AND PROPELLER PLANTS

Main Engines/Generators:	4 x 1560 kw CAT 3512
Emergency Generator:	1 x 100 kw Caterpillar
Main Propulsion:	2 x 1600Kw Schottel
FWD Tunnel Thrusters:	3 x 880 kw Brunvoll CPP

## CARGO CAPACITIES

Deck Cargo:	2 500 Tons
Deck Area:	901 m <sup>2</sup> 60.9 m x 14.4 m free space
Deck Strength:	5 Tons/m <sup>2</sup>
Fuel Oil:	915 m <sup>3</sup> , in 19 tanks
Liquid Mud (SG 2.8):	1370 m <sup>3</sup> , in 13 combi tanks
Agitators:	Fitted in each mud tanks
Brine (SG 2.5):	1370 m <sup>3</sup> , in 13 combi tanks
Base Oil:	145 m <sup>3</sup> , in 1 tank
Pot Water:	900 m <sup>3</sup> , in 8 tanks
Drill Water / Ballast:	2370 m <sup>3</sup> , in 22 tanks
Methanol:	150 m <sup>3</sup> , in 1 tank
Glycol:	165 m <sup>3</sup> , in 1 tank
Slop:	50 m <sup>3</sup> , in 1 tank
Cement / Barite / Bentonite:	340 m <sup>3</sup> , in 5 tanks
ORO:	1900 m <sup>3</sup> (NOFO 2009)

## DISCHARGE RATE

Fuel oil:	2 x 200 m <sup>3</sup> /hour @ 9 bar
Liquid Mud (SG 2.8):	2 x 100 m <sup>3</sup> /hour @ 24/11 bar
Brine (SG 2.5):	2 x 100 m <sup>3</sup> /hour @ 24/11 bar
Base Oil:	1 x 100 m <sup>3</sup> /hour @ 9 bar
Pot Water:	2 x 200 m <sup>3</sup> /hour @ 9 bar
Drill Water / Ballast:	2 x 200 m <sup>3</sup> /hour @ 9 bar
Methanol:	2 x 75 m <sup>3</sup> /hour @ 9 bar
Glycol:	2 x 75 m <sup>3</sup> /hour @ 9 bar
Cement / Barite / Bentonite:	2 x 60 m <sup>3</sup> /min @ 5,3 bar

## ENVIRONMENT AND CARGO CONTROL PLANTS

Incinerator:	Prepared for.
Tank Cleaning:	Per Gjerdrum AS
Special Cargo Tanks:	Zink coated for Methanol
Inert Gas System:	N <sub>2</sub> Generator
Cargo Manifolds:	Midships SB&PS and Aft

## NAVIGATION

Bridge Consoles:	Aft, Fwd. and both Wings
Operation Control Office:	Located on Bridge
Autopilot:	Simrad AP 50
DP System:	Kongsberg K Master DP 2
Joystick System:	Kongsberg C-Joy Constant
DP Motion System 1:	2 x Sea Tex MRU 2
DP Motion System 1:	1 x Sea Tex MRU 5
DGPS:	2 x Furuno GP 150
DGPS for DP system:	1 x DPS 200 & 1 x DPS 232 (Kongsberg)
CyScan for DP System:	1 x CyScan Laser
RadaScan:	1x ECW-28B-D525
Wind Sensor:	2 x Kongsberg Maritime
Radar 1:	Furuno FAR 2837 S
Radar 2:	Furuno FCR 2827 Chart Radar
Echo Sounder:	Furuno FE 700
Gyro:	3 x Simrad GC 80
Speed Repeater:	Skipper IR 300
VDR:	Furuno VR 3000
GPS:	2 x Furuno GP 150
Bridge Watch:	Havyard Bridge Automation System
ECDIS:	Furuno Teccis T - 2137
Speed log:	Skipper EML 224

## SPEED AND FUEL CONSUMPTION

Full speed:	14.5 knots 19,5 m <sup>3</sup> /24 hours
Service speed:	12.5 knots 12,0 m <sup>3</sup> /24 hours
Economic speed:	11.0 knots 8,5 m <sup>3</sup> /24 hours
DP operation:	4,5 m <sup>3</sup> /24 hours at position keeping
Harbor mode:	1.1 m <sup>3</sup> /24 hours

## CARGO HANDLING EQUIPMENT

1 x TTS Marine GPK knuckle crane, SWL 3 tons/13 meter
1 x TTS Marine GPT telescopic jib, SWL 3 tons/13 meter
2 x 10 t Capstans aft
1 x 10t Capstan on B deck
6 x Cargo Securing Winches, 3 on each side
2 x Tugger Winch, 10 ton Port and 15 ton SB

## LIFE SAVING EQUIPMENT

Ship Certificate:	25 persons
Life Rafts:	4 x 25 persons
MOB:	1 x Mare GTC 700-2VD Redundant
MOB Davit:	1 x Mare Safety
Survival Suits:	25 SOLAS Immersion Suits

## COMMUNICATION

Navtex:	Furuno NX-700 B
Radar Transponder:	2 x Jotron Tron SART
DSC Terminal:	Furuno FS-2570 C
AIS:	Furuno FA 150
EPIRB manual:	Jotron 45 SX
EPIRB Free Float:	Jotron Tron 40 S Mk II
Radio Station:	SSB, MF, HF, Furuno FS-2570 C
VHF Portable:	3 x Jotron Tron TR 20 GMDSS
VHF Station:	Furuno FM-8800 S
UHF Portable:	5 x Motorola GP 340
Inmarsat C:	Furuno Felcom 15
Intercom:	Zenitel ACM 144 66/VO
Sound System:	Vingtor VSS 111
Emergency:	Vingtor VSP 211 L
PA System:	Zenitel VPA 120, 240 and 400
Satellite Communication:	SEVSAT 4003-4006
Mobile Phone:	TBA
Vessel E-mail:	<a href="mailto:captain.mira@vestlandoffshore.no">captain.mira@vestlandoffshore.no</a>

## ACCOMMODATION

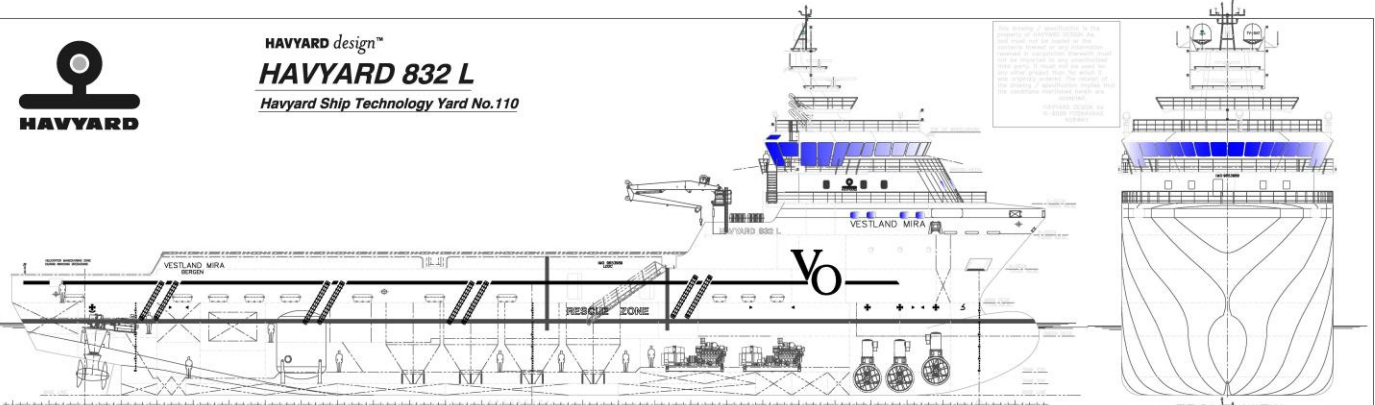
Outfitted for 25 persons in spacious and comfortable facilities	
Single Cabins:	9 with bathrooms
Double Cabins:	4 with bathrooms
4 person Cabins:	2 with bathrooms
Hospital:	1 highest standard
Office:	1 fully outfitted
Day Room:	2 comfortable outfitted
Gymnasium:	1 fully outfitted
Entertainment:	In Day Rooms and all Cabins
Antiroll Tank:	Three off anti-roll stabilizing tanks



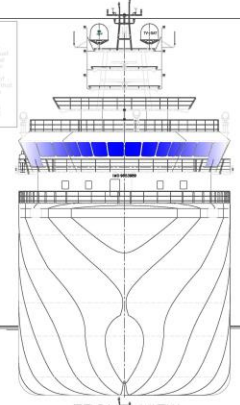


**HAVYARD design™**  
**HAVYARD 832 L**  
 Havyard Ship Technology Yard No.110

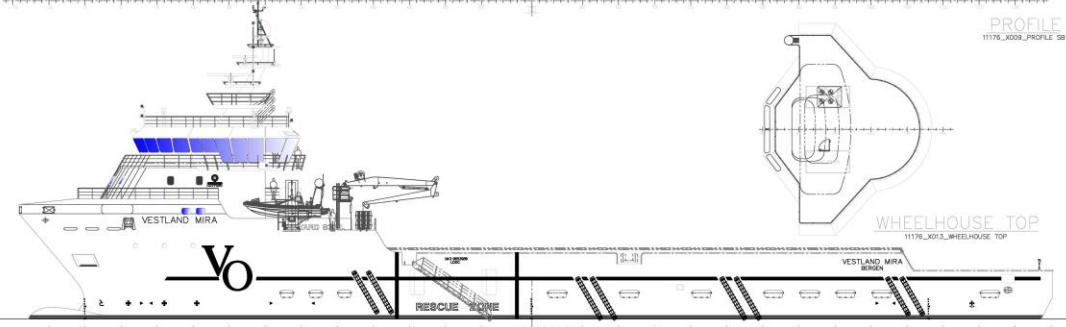
CONSTRUCTION OF THIS VESSEL IS IN ACCORDANCE WITH THE RULES OF THE MARITIME SUPPLY VESSEL CLASSIFICATION SOCIETY (MSV) FOR THE CLASSIFICATION OF SUPPLY VESSELS (PSV) AND IS SUBJECT TO THE SUPERVISION OF THE DANISH MARITIME AUTHORITY (DMA). THE VESSEL IS DESIGNED TO OPERATE IN ALL WEATHER CONDITIONS AND IS CAPABLE OF OPERATING IN ICE UP TO 1/4 CLASS.



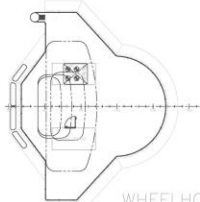
PROFILE  
11176\_X009\_PROFILE SB



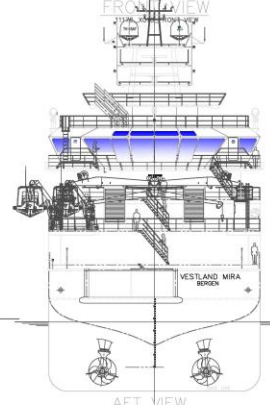
FRONT VIEW



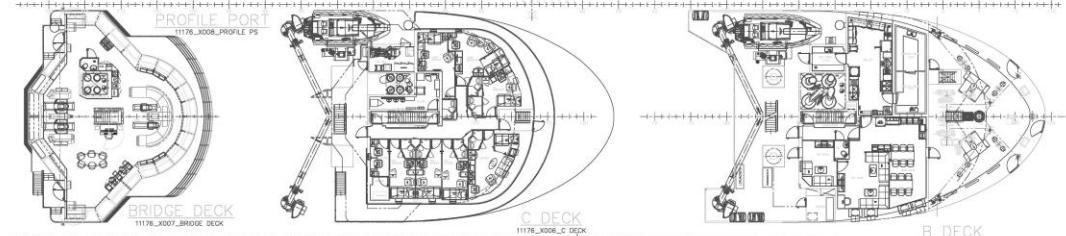
PROFILE PORT  
11176\_X008\_PROFILE PS



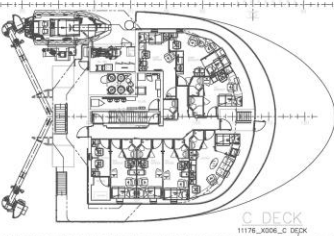
WHEELHOUSE TOP  
11176\_X013\_WHEELHOUSE TOP



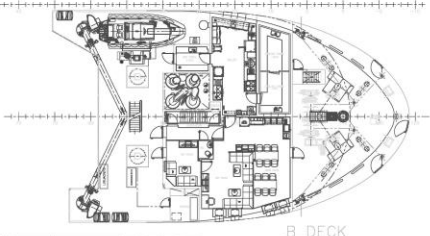
AFT VIEW  
11176\_X012\_AFT VIEW



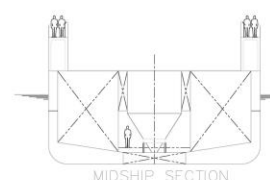
BRIDGE DECK  
11176\_X007\_BRIDGE DECK



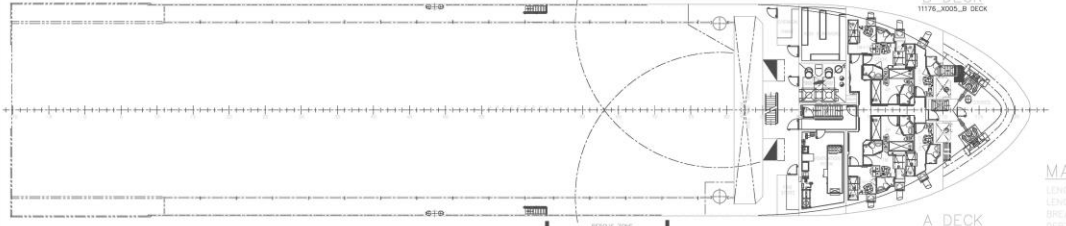
C DECK  
11176\_X006\_C DECK



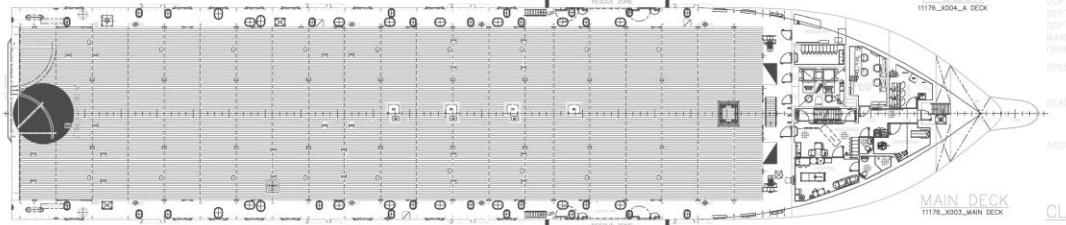
B DECK  
11176\_X005\_B DECK



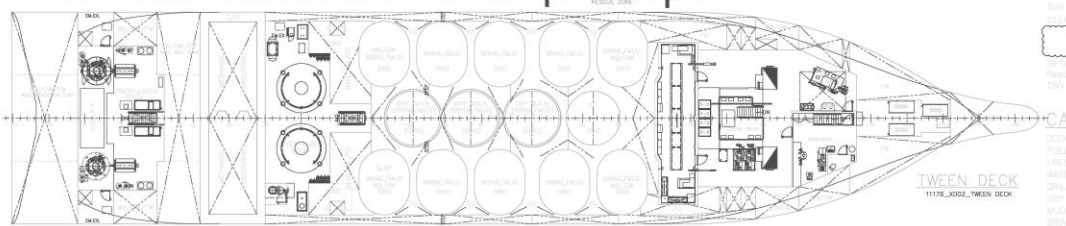
MIDSHIP SECTION  
11132\_X011\_MIDSHIP SECTION



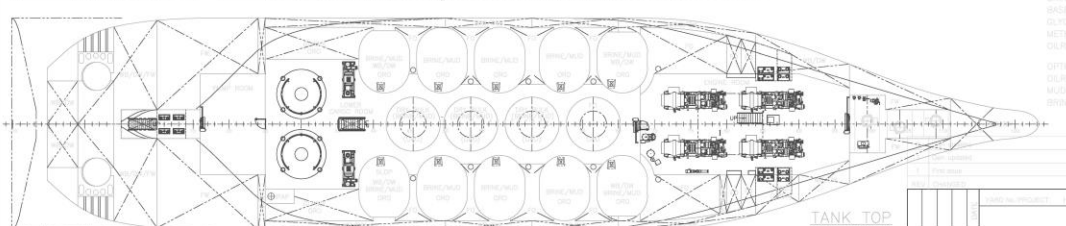
A DECK  
11176\_X004\_A DECK



MAIN DECK  
11176\_X003\_MAIN DECK



TWEEN DECK  
11176\_X002\_TWEEN DECK



TANK TOP  
11176\_X001\_TANK TOP

**MAIN PARTICULARS:**

- LENGTH OVER ALL : 86.00 m
- LENGTH BCTW. PEER'S : 74.40 m
- BREADTH : 17.60 m
- DEPTH TO TWEEN DECK : 4.80/4.40 m
- DEPTH TO MAIN DECK : 7.70 m
- DEPTH TO A DECK : 15.50 m
- MAXIMUM DRAUGHT : 6.40 m
- FRAME SPACING : 6.60 m
- SPEED : ~15 KNOTS AT WL 5.00 m (24/3000 kW)

- DEADWEIGHT : ~4300 TON AT WL 6.40 m
- ACCOMMODATION : 20 PERSONS

**CLASS:**

Div + 1A1 - SF - ED - HL(2.0) - DYNRES-AUTR - DK(\*)  
 11176\_X003\_11176\_X002\_11176\_X004\_11176\_X005\_11176\_X006\_11176\_X007\_11176\_X008\_11176\_X009\_11176\_X010\_11176\_X011\_11176\_X012\_11176\_X013

Rescue/Standby for 200 persons acc. to IMO  
 DNV FIR 1

**CAPACITIES:**

- DECK AREA : ~ 901 m²
- FUEL OIL : ~1015 m³
- FRESH WATER : ~400 m³
- WATER BALLAST : ~2070 m³
- DRILLING WATER : ~2370 m³
- DRY CARGO : ~340 m³
- MUD : ~1750 m³
- BRINE : ~1750 m³
- BASE OIL : ~145 m³
- GLYCOL : ~189 m³
- METHANOL (LFL\*) : ~150 m³
- GLYBERCONDENSER : ~1430 m³

**OPTIONAL CAPACITIES:**

- GLYBERCONDENSER : ~ 570 m³
- MUD : ~ 220 m³
- BRINE : ~ 270 m³

NO.	DESCRIPTION	QTY	UNIT	REMARKS
1	DRILLING WATER	2370	m³	
2	DRY CARGO	340	m³	
3	FRESH WATER	400	m³	
4	FUEL OIL	1015	m³	
5	GLYCOL	189	m³	
6	GLYBERCONDENSER	1430	m³	
7	METHANOL (LFL*)	150	m³	
8	MUD	1750	m³	
9	BASE OIL	145	m³	
10	BRINE	1750	m³	
11	DRILLING WATER	2370	m³	
12	DRY CARGO	340	m³	
13	FRESH WATER	400	m³	
14	FUEL OIL	1015	m³	
15	GLYCOL	189	m³	
16	GLYBERCONDENSER	1430	m³	
17	METHANOL (LFL*)	150	m³	
18	MUD	1750	m³	
19	BASE OIL	145	m³	
20	BRINE	1750	m³	

<b>GENERAL ARRANGEMENT</b>			
<b>86 x 17.6 m PSV</b>			
NO. OF DECKS	NO. OF TANKS	NO. OF CARGO	NO. OF PASSENGERS
12	1	1	1
NO. OF PASSENGERS	NO. OF CREW	NO. OF PASSENGERS	NO. OF CREW
20	12	20	12
VESSEL NAME		VESSEL NO.	
Vestland PSV AS		5384 Torangsvåg	
DESIGNED BY		NO. OF DECKS	
HAVYARD design™		12	
NO. OF TANKS		NO. OF CARGO	
1		1	
NO. OF PASSENGERS		NO. OF CREW	
20		12	
11176-101-001			
110-101-001			

